



D.C. OCFO Roundtable

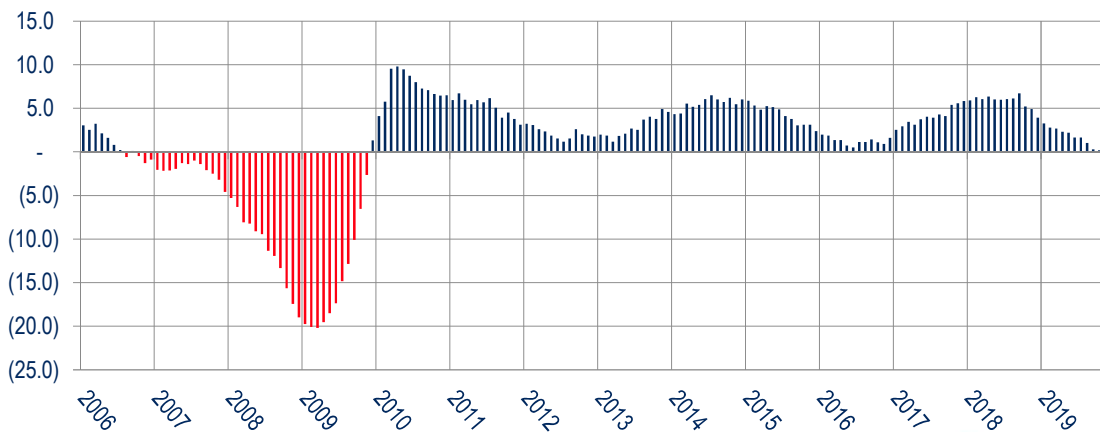
The D.C. Economy: Current Conditions & Outlook

Jeannette Chapman
Deputy Director and Senior Research Associate
The Stephen S. Fuller Institute
Schar School of Policy and Government
George Mason University



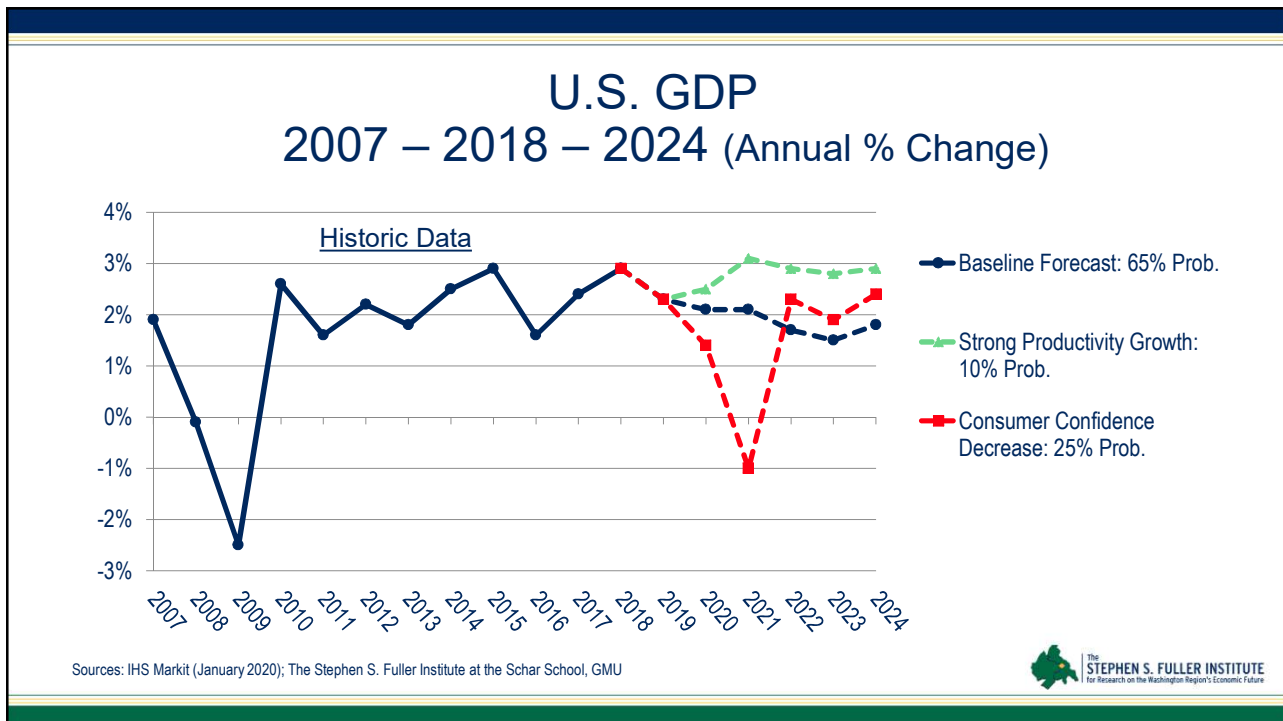
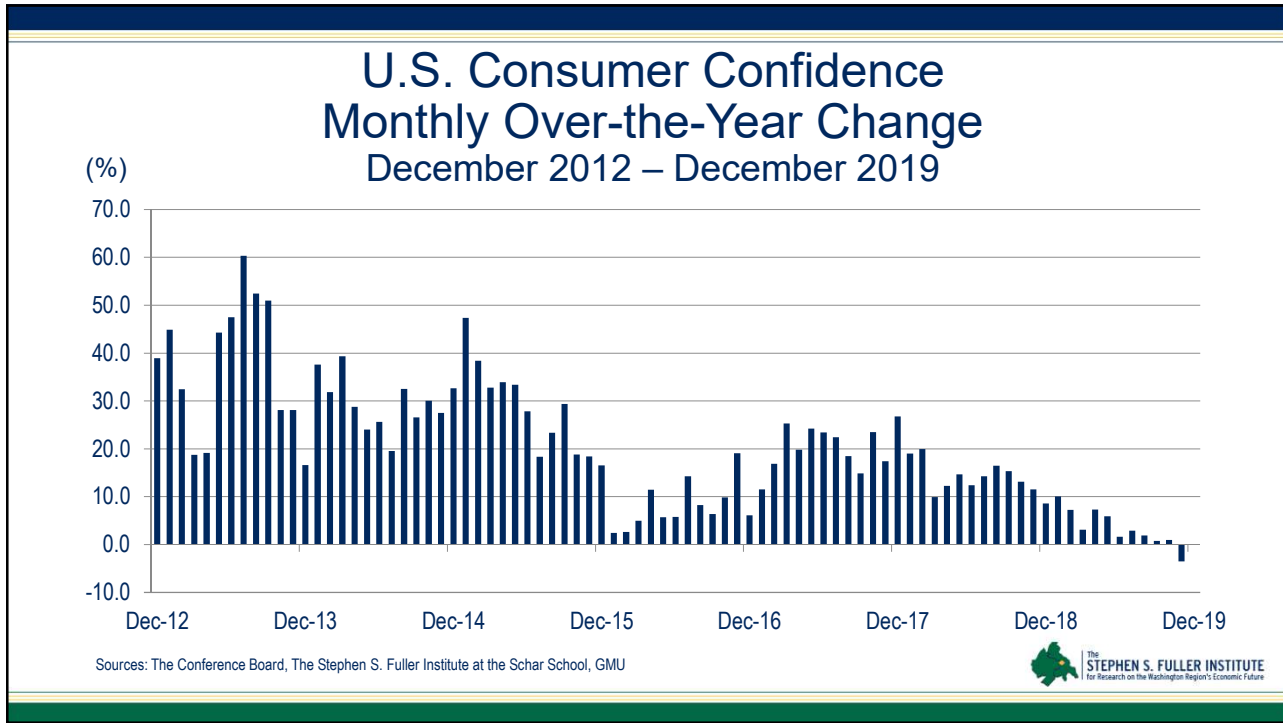
January 22, 2020

U.S. Leading Index Month-Over-Year Percent Change

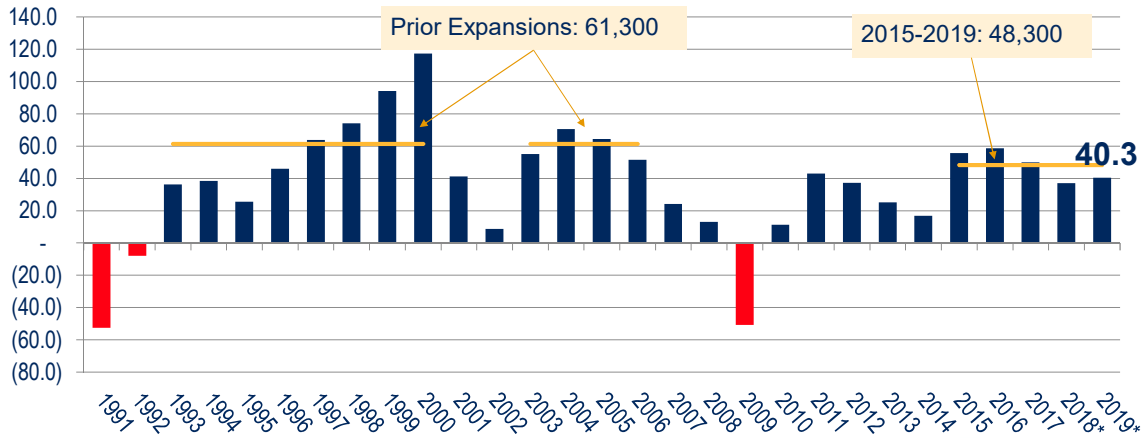


Sources: The Conference Board, The Stephen S. Fuller Institute at the Schar School, GMU





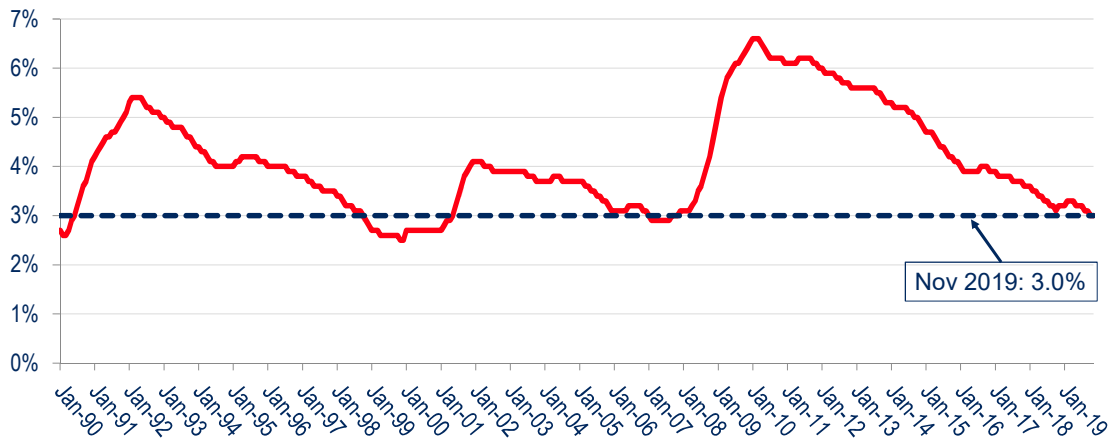
Job Change in the Washington Region 1991 – 2019* (000s)



Sources: U.S. Bureau of Labor Statistics (Not Seasonally Adjusted), The Stephen S. Fuller Institute at the Schar School, GMU
*2018 and 2019 include projected revisions to the preliminary data and do not align with the estimates published by BLS.

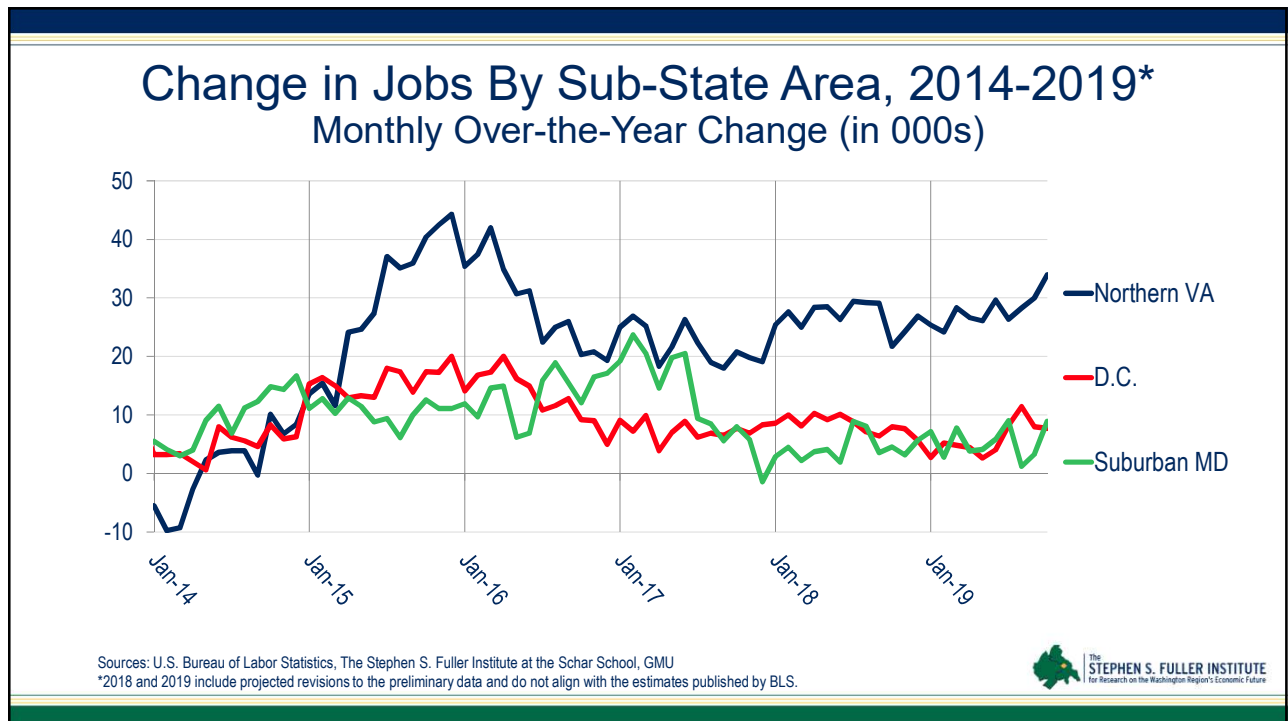
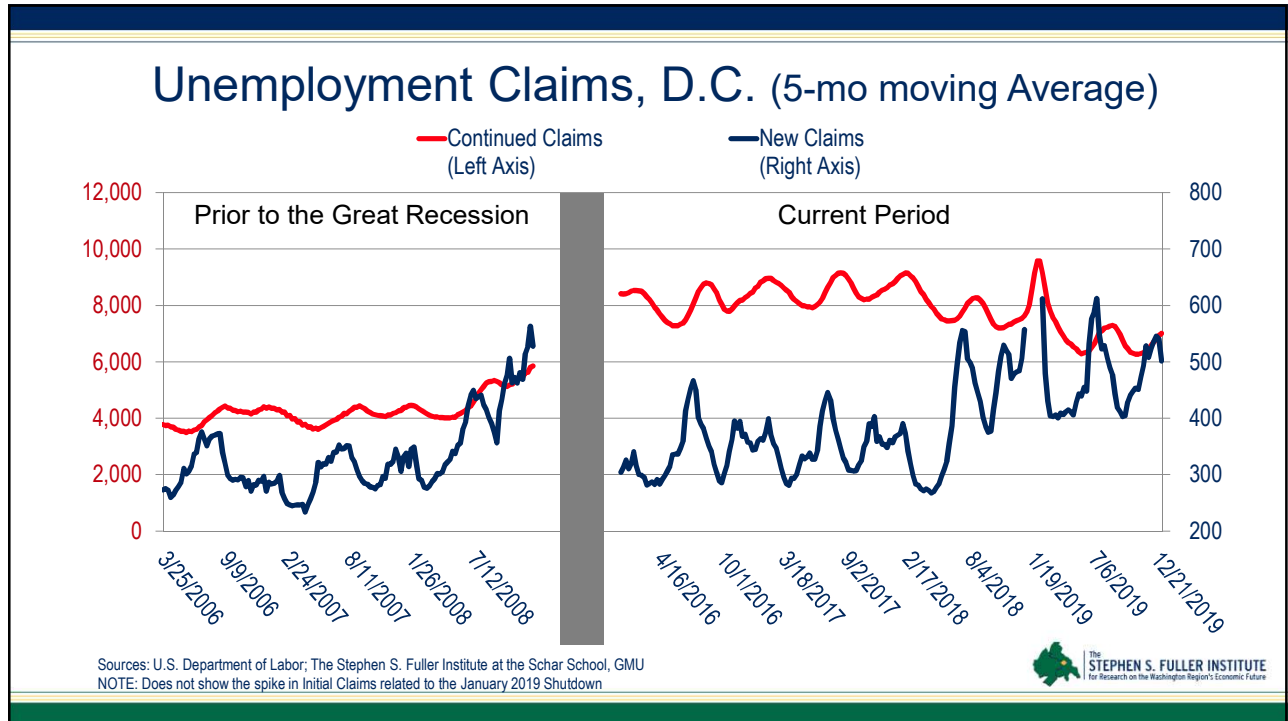


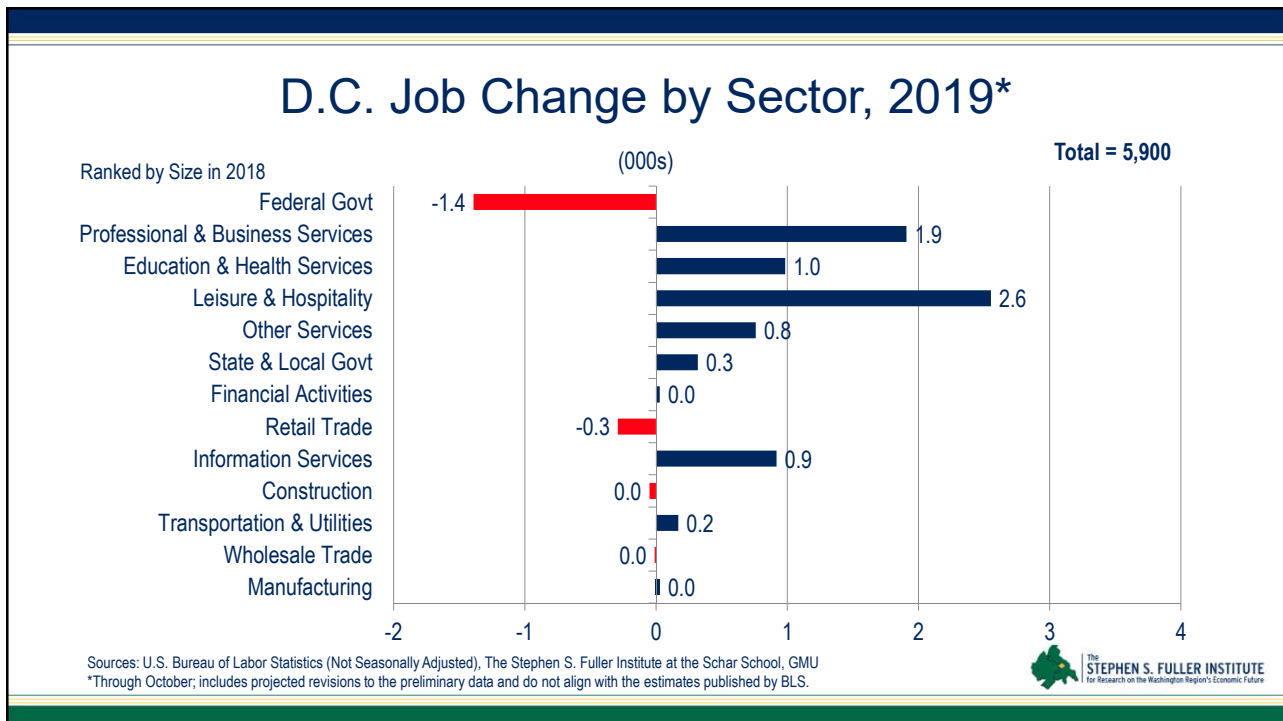
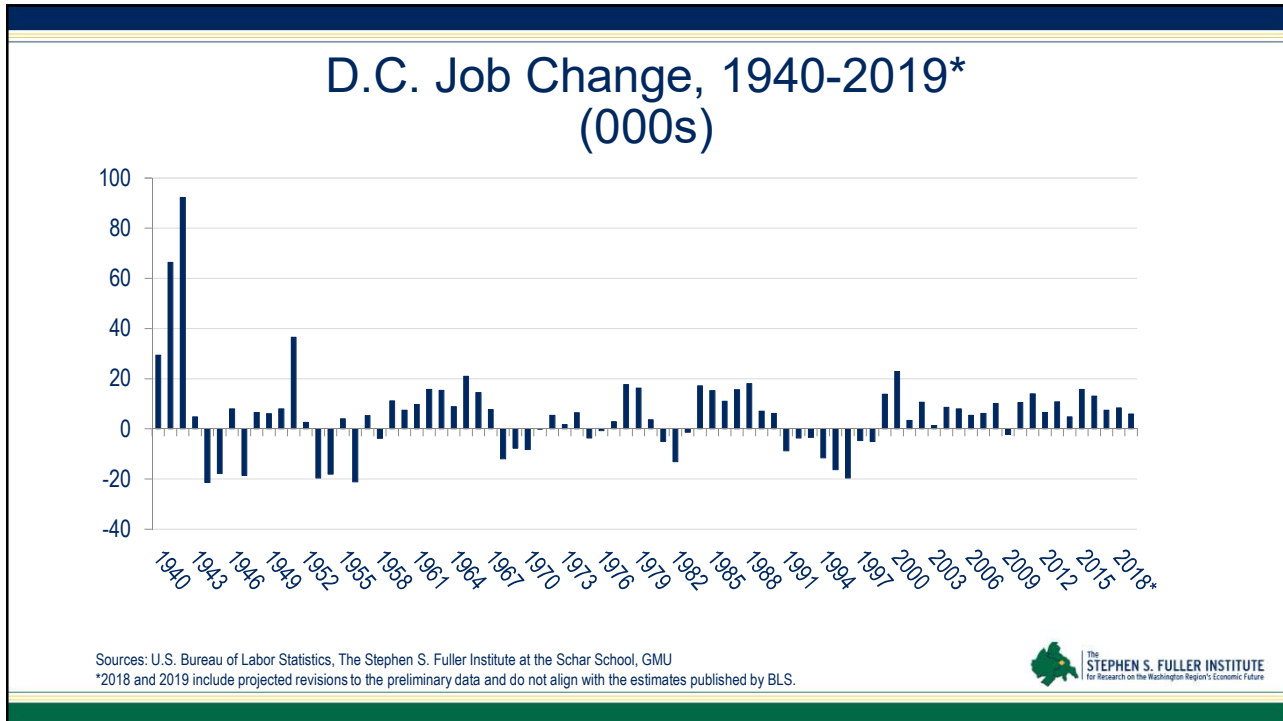
Unemployment Rate, Washington Region Jan 1990 – Nov 2019



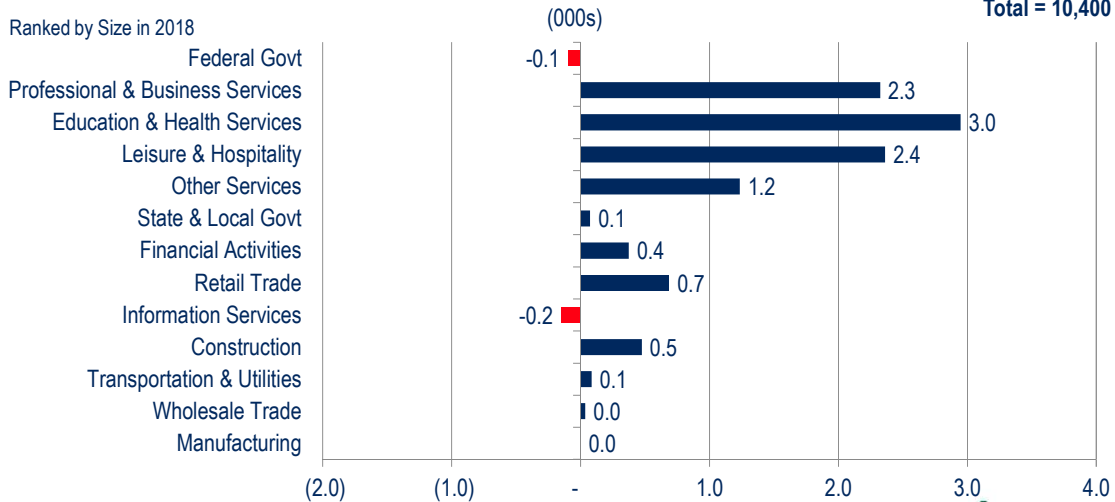
Sources: U.S. Bureau of Labor Statistics (Seasonally Adjusted), The Stephen S. Fuller Institute at the Schar School, GMU







D.C. Job Change by Sector, 2010-2017 Average

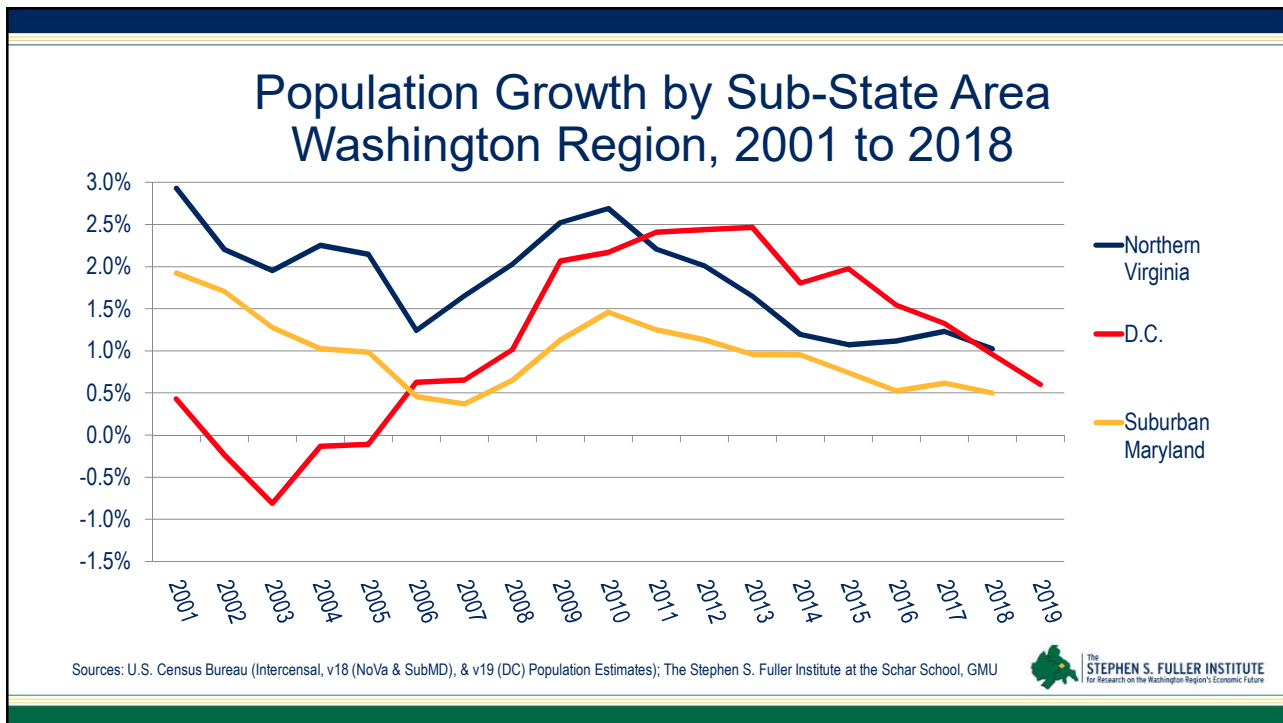
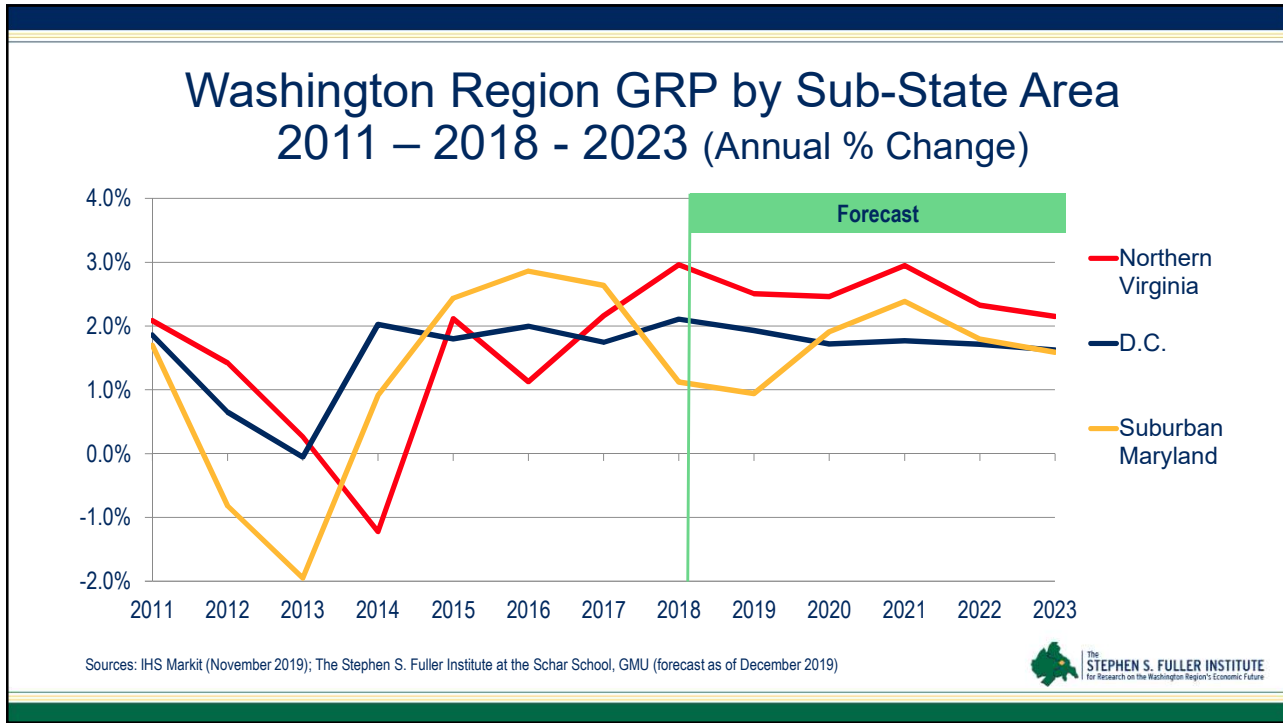


Employment Change by Sub-State Area (000s)

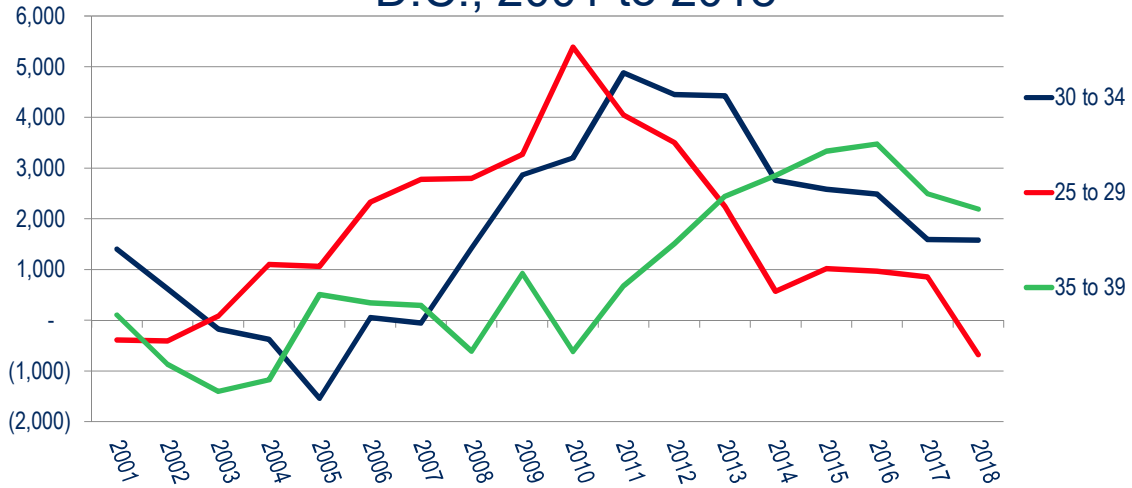
	2016	2017	2018*	2019*	2020	2021	2022	2023
D.C.	13.1	7.4	8.3	5.9	8.9	4.9	4.2	3.6
Sub. MD	13.4	12.9	4.4	5.4	9.2	7.2	5.2	1.3
No. VA	28.8	21.9	26.8	27.9	22.6	23.6	17.8	12.9
Residual**	3.3	7.6	(2.6)	1.1	0.2	0.1	0.2	0.1
REGION	58.6	49.8	36.9	40.3	40.9	35.8	27.4	17.9

Source: BLS, IHS Economics, The Stephen S. Fuller Institute at the Schar School, GMU (forecast as of December 2019)
 *2018 and 2019 include projected revisions to the preliminary data and do not align with the estimates published by BLS.
 **Residual includes Jefferson, WV and jobs that cannot be attributed to a sub-state area.





Population Change by Select Age D.C., 2001 to 2018



Sources: U.S. Census Bureau (Intercensal, v18 Population Estimates); The Stephen S. Fuller Institute at the Schar School, GMU

