



Business Consortium

The Washington Region's Economy: Current Conditions & Outlook

Jeannette Chapman
Deputy Director and Senior Research Associate
The Stephen S. Fuller Institute
Schar School of Policy and Government
George Mason University

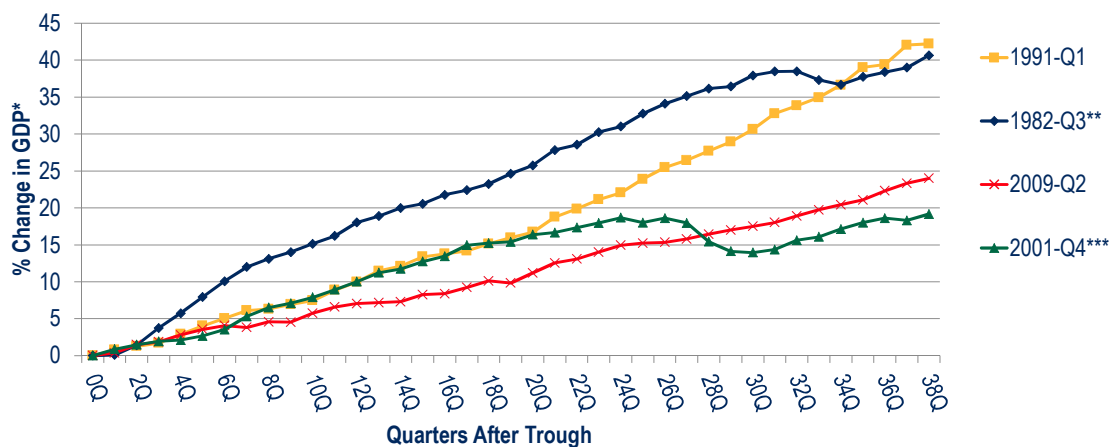


April 5, 2019

U.S. Economic Overview



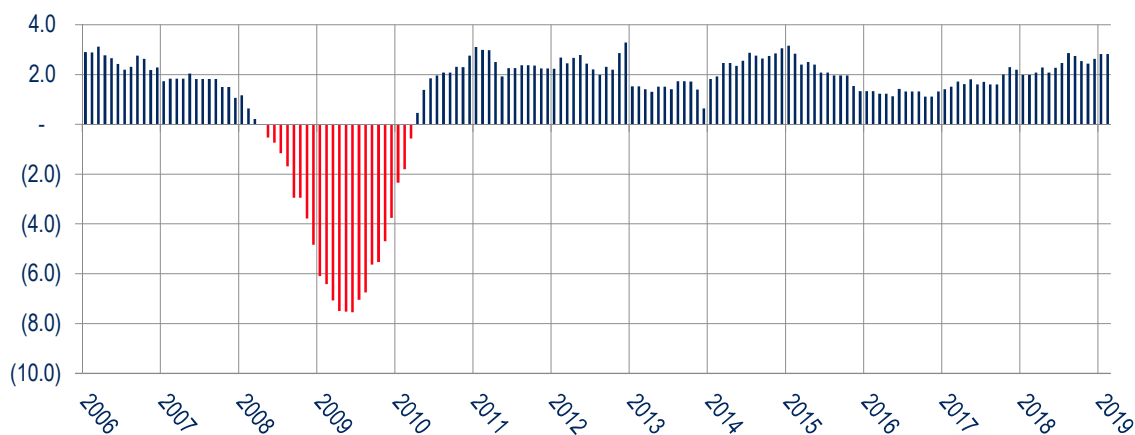
Recession Recovery Patterns of GDP Past Four Recessions



*in 1992 or 2009 Chained Dollars; ** Quarters 32+ include the 1991 Recession; *** Quarters 25+ include the 2009 Recession
Sources: Bureau of Economic Analysis, The Stephen S. Fuller Institute at the Schar School, GMU

The STEPHEN S. FULLER INSTITUTE
For Research on the Washington Region's Economic Future

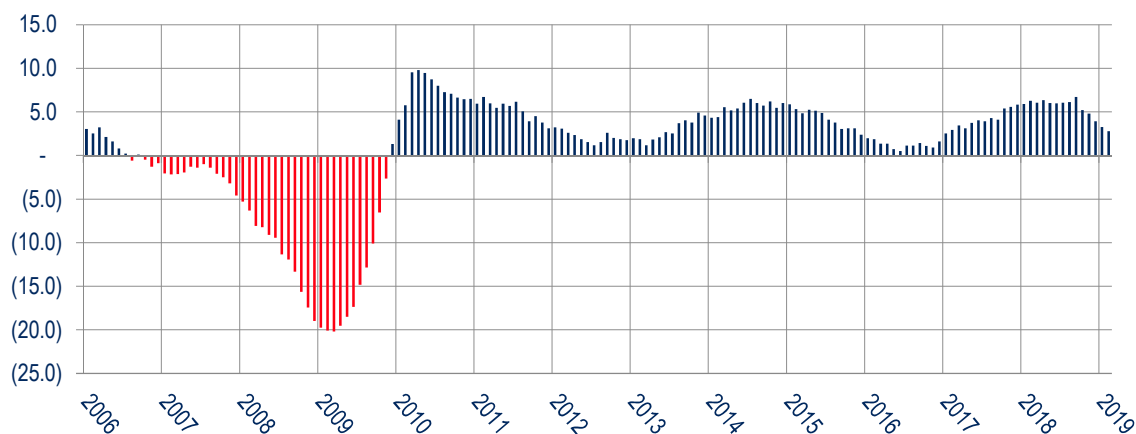
U.S. Coincident Index Month-Over-Year Percent Change



Sources: The Conference Board, The Stephen S. Fuller Institute at the Schar School, GMU

The STEPHEN S. FULLER INSTITUTE
For Research on the Washington Region's Economic Future

U.S. Leading Index Month-Over-Year Percent Change

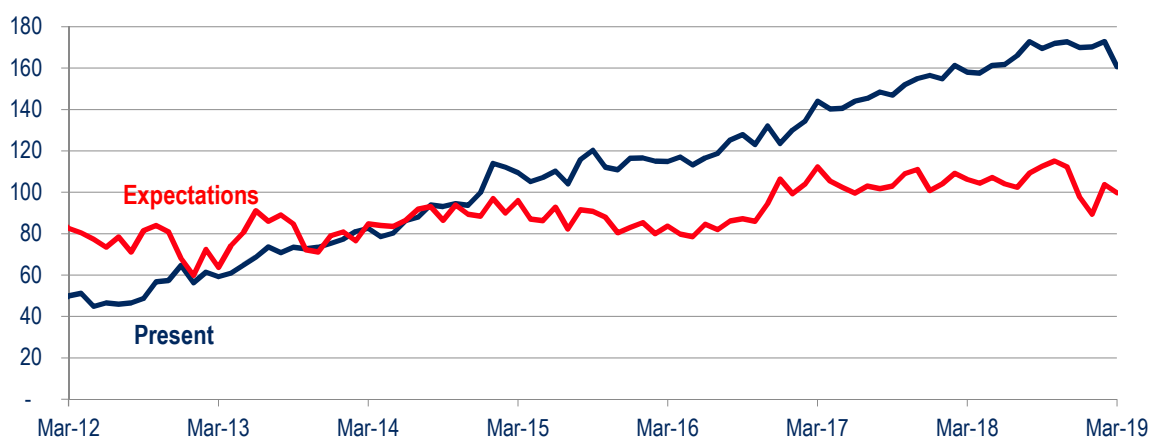


Sources: The Conference Board, The Stephen S. Fuller Institute at the Schar School, GMU



THE STEPHEN S. FULLER INSTITUTE
For Research on the Washington Region's Economic Future

U.S. Consumer Confidence March 2012 – March 2019

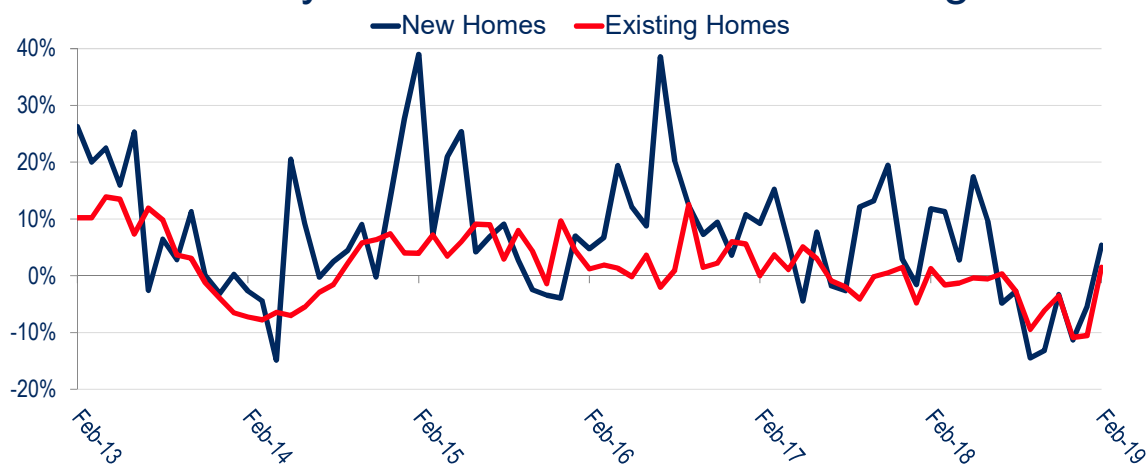


Sources: The Conference Board, The Stephen S. Fuller Institute at the Schar School, GMU



THE STEPHEN S. FULLER INSTITUTE
For Research on the Washington Region's Economic Future

U.S. New and Existing Home Sales Monthly Over-the-Year Percent Change

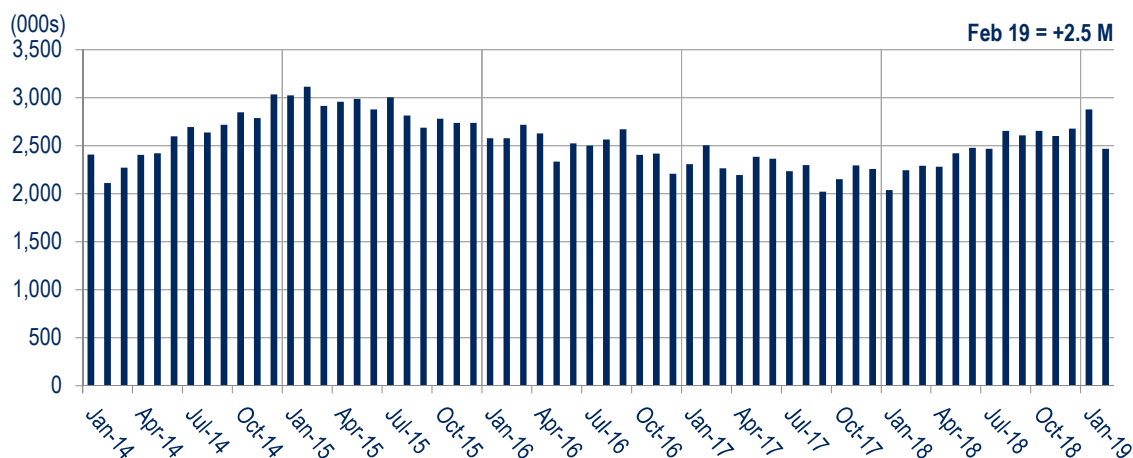


Sources: U.S. Census (New), National Association of Realtors (Existing), The Stephen S. Fuller Institute at the Schar School, GMU



THE STEPHEN S. FULLER INSTITUTE
For Research on the Washington Region's Economic Future

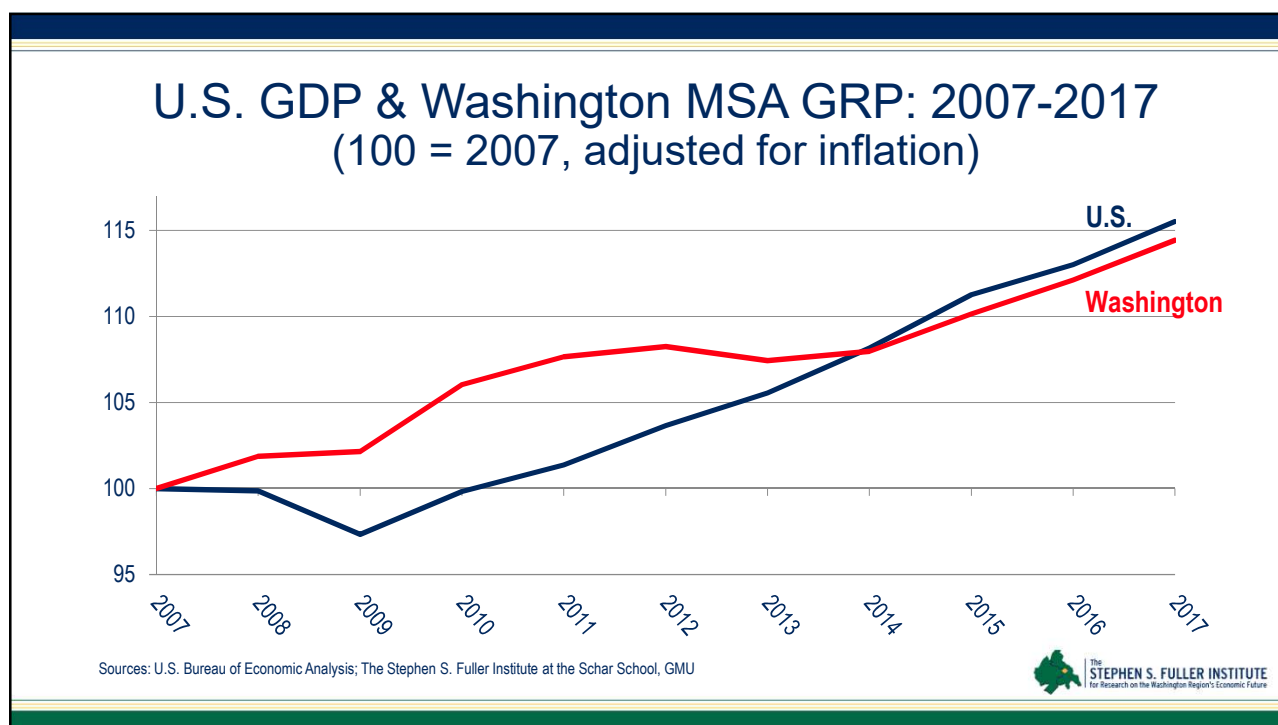
U.S. Annual Change in Payroll Jobs Monthly Over-the-Year



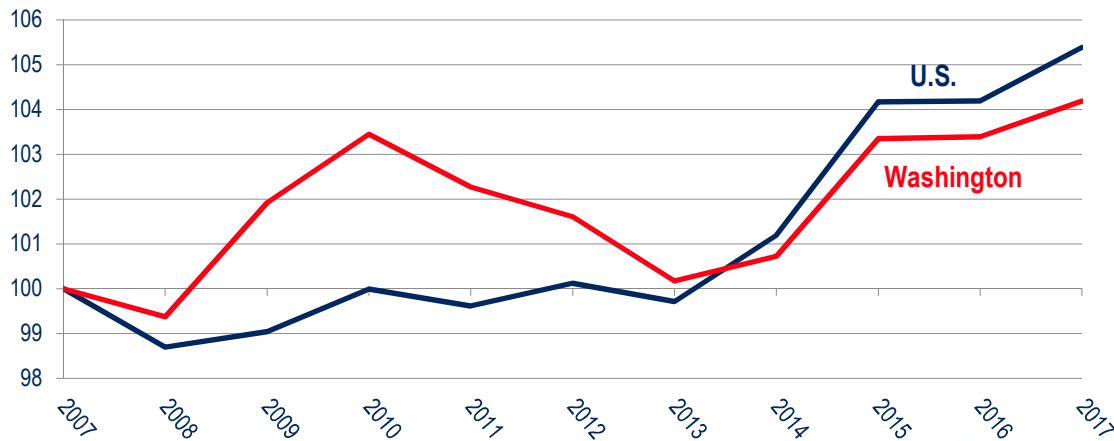
Sources: U.S. Bureau of Labor Statistics (Not Seasonally Adjusted), The Stephen S. Fuller Institute at the Schar School, GMU



THE STEPHEN S. FULLER INSTITUTE
For Research on the Washington Region's Economic Future



Average Wage in U.S. & Washington Region 2007-2017 (100 = 2007, adjusted for inflation)

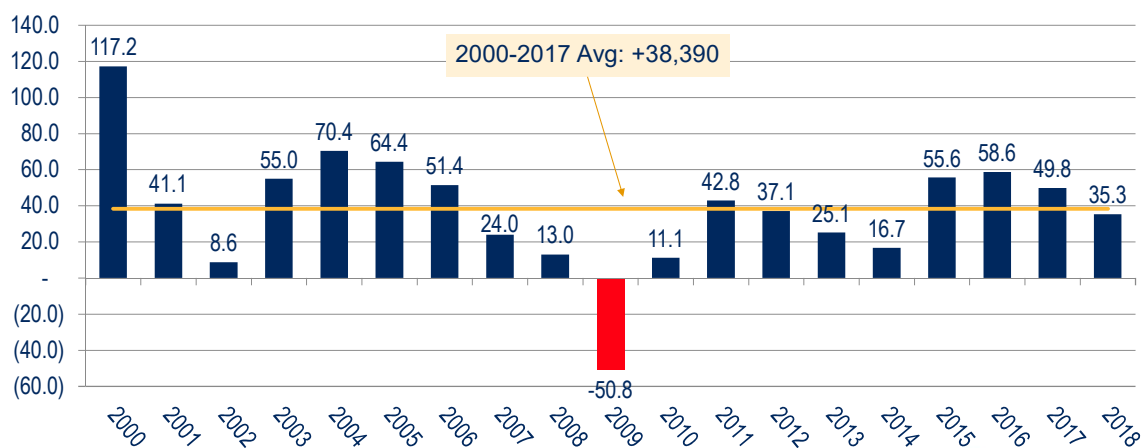


Sources: U.S. Bureau Labor Statistics; The Stephen S. Fuller Institute at the Schar School, GMU



THE STEPHEN S. FULLER INSTITUTE
For Research on the Washington Region's Economic Future

Job Change in the Washington Region 2000 – 2018 (in thousands)

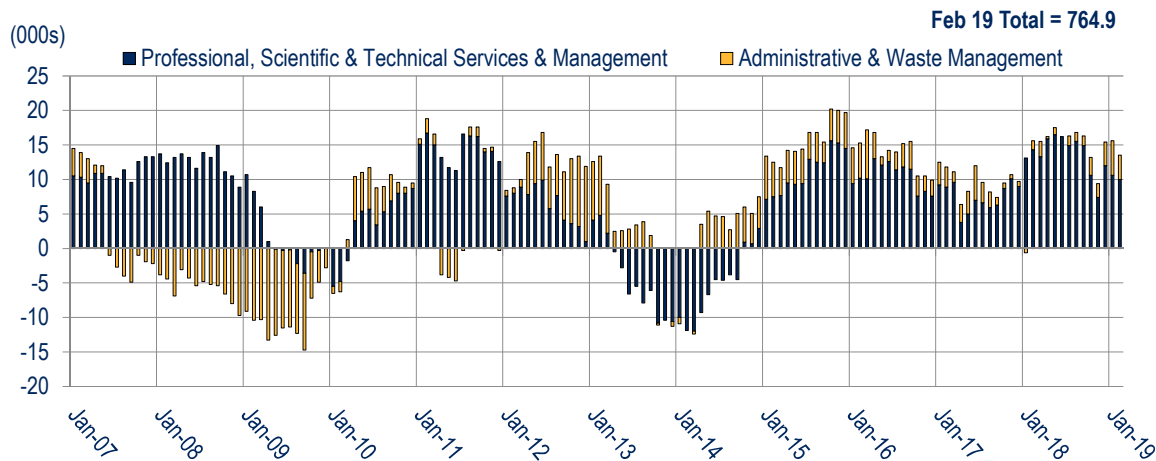


Sources: U.S. Bureau of Labor Statistics (Not Seasonally Adjusted), The Stephen S. Fuller Institute at the Schar School, GMU

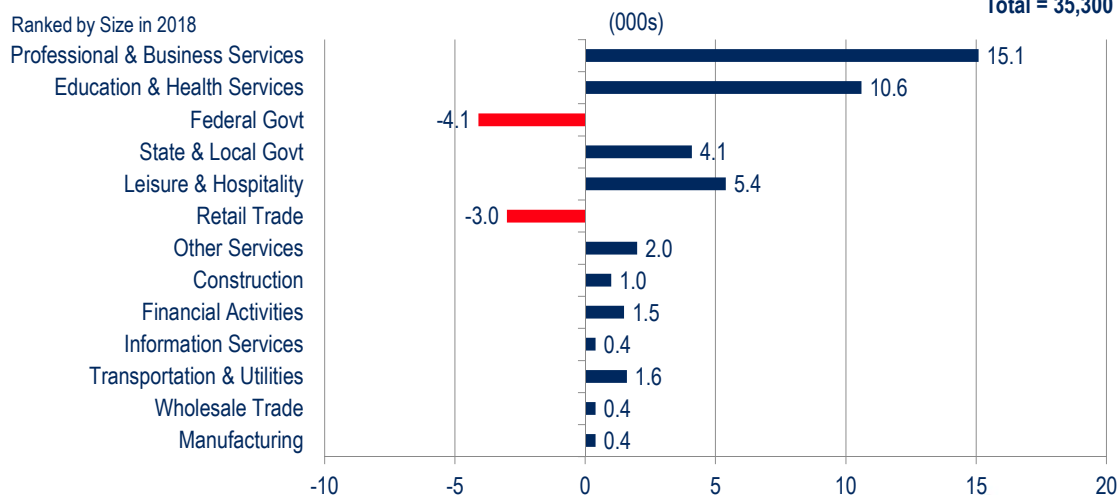


THE STEPHEN S. FULLER INSTITUTE
For Research on the Washington Region's Economic Future

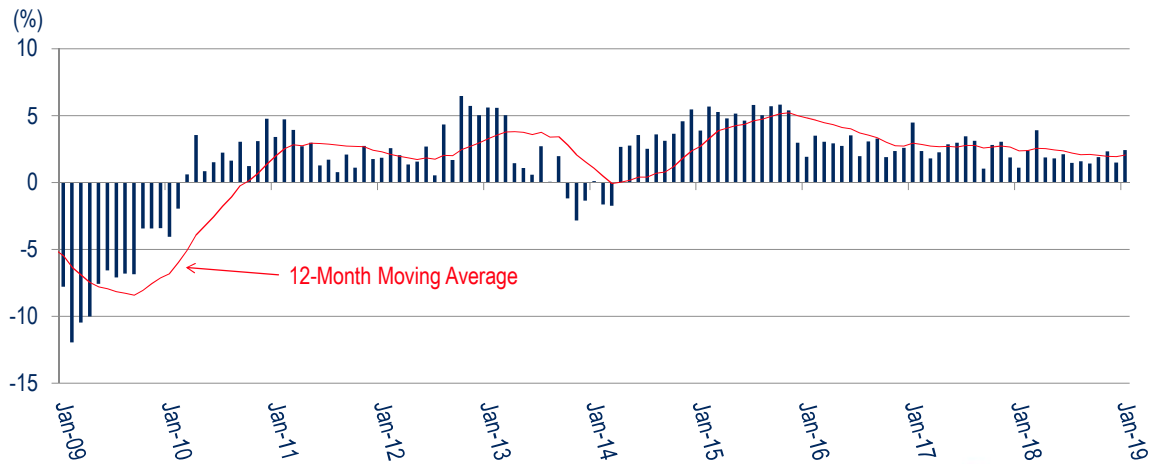
Professional and Business Services Jobs Washington MSA, Annual Month Over-the-Year



Washington MSA Job Change by Sector 2018



Washington Region Coincident Index Monthly Over-the-Year Percent Change

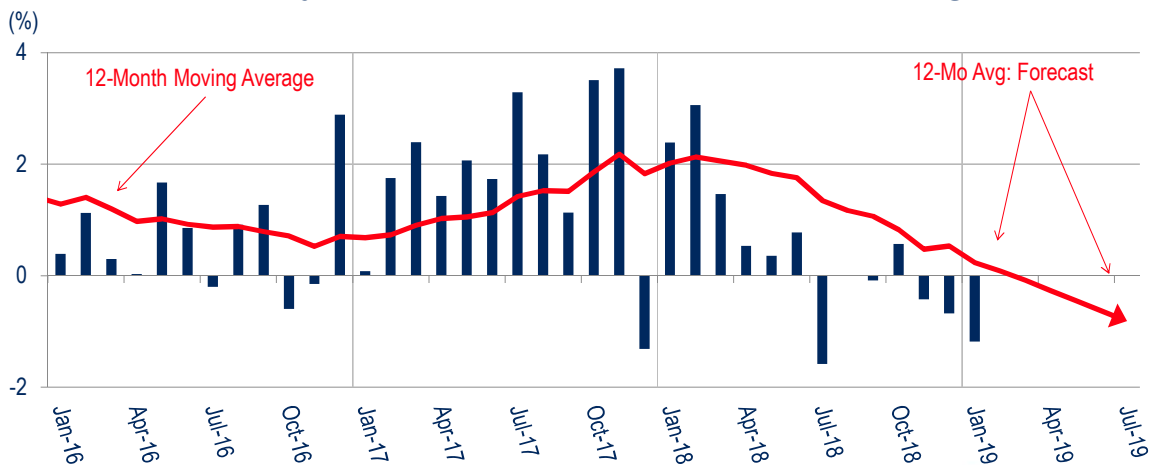


Source: The Stephen S. Fuller Institute at the Schar School, GMU



THE STEPHEN S. FULLER INSTITUTE
For Research on the Washington Region's Economic Future

Washington Region Leading Index Monthly Over-the-Year Percent Change

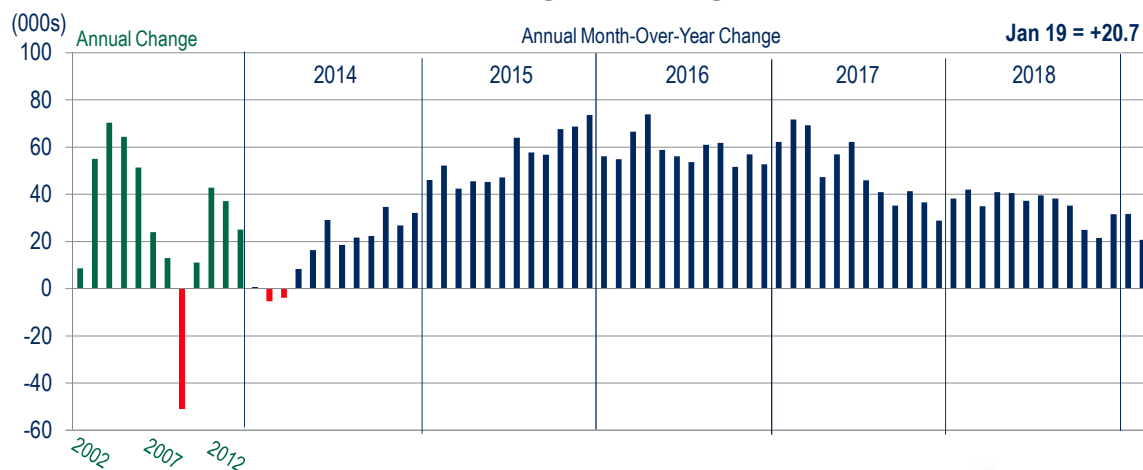


Source: The Stephen S. Fuller Institute at the Schar School, GMU



THE STEPHEN S. FULLER INSTITUTE
For Research on the Washington Region's Economic Future

Annual Job Change, 2002-2019 Washington Region

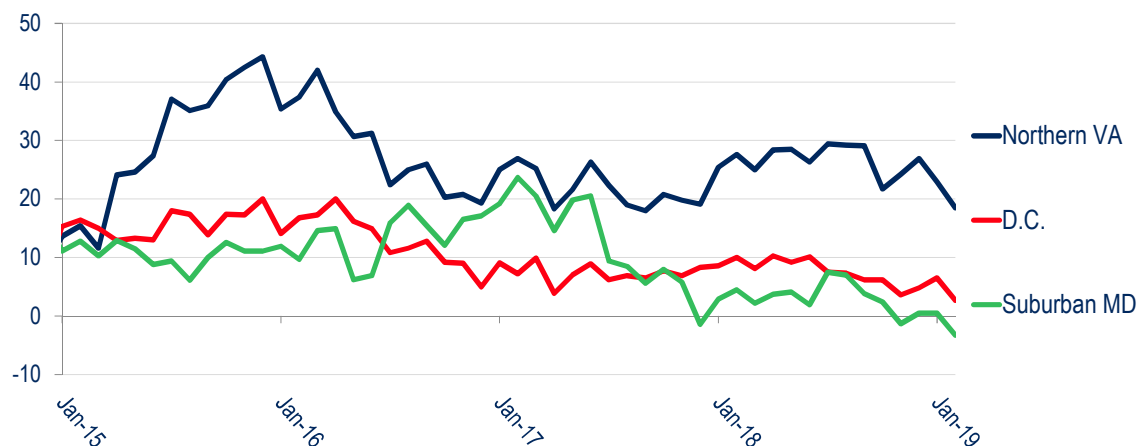


Sources: U.S. Bureau of Labor Statistics (Not Seasonally Adjusted), The Stephen S. Fuller Institute at the Schar School, GMU



THE STEPHEN S. FULLER INSTITUTE
For Research on the Washington Region's Economic Future

Change in Jobs By Sub-State Area Monthly Over-the-Year Change (in 000s)

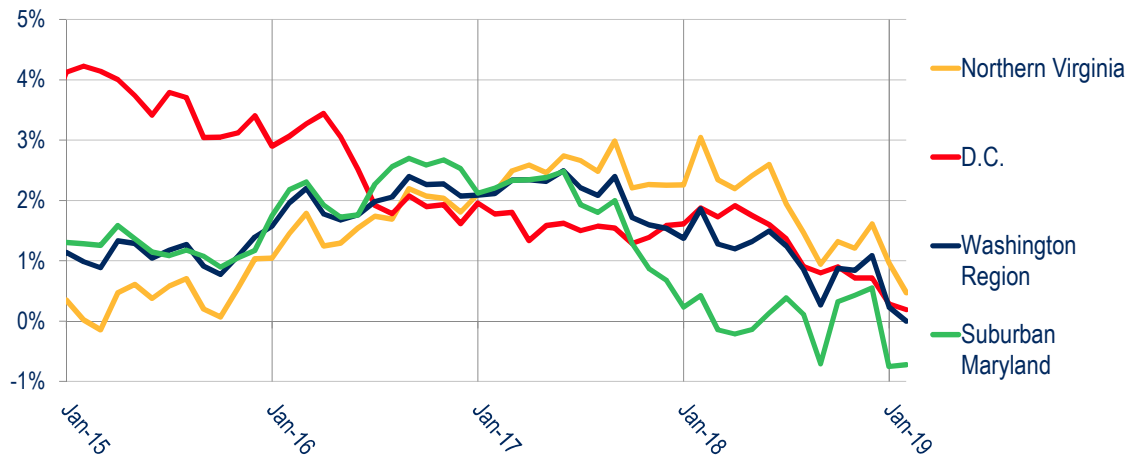


Sources: U.S. Bureau of Labor Statistics, The Stephen S. Fuller Institute at the Schar School, GMU



THE STEPHEN S. FULLER INSTITUTE
For Research on the Washington Region's Economic Future

Change in Employed Residents By Sub-State Area Monthly Over-the-Year Change

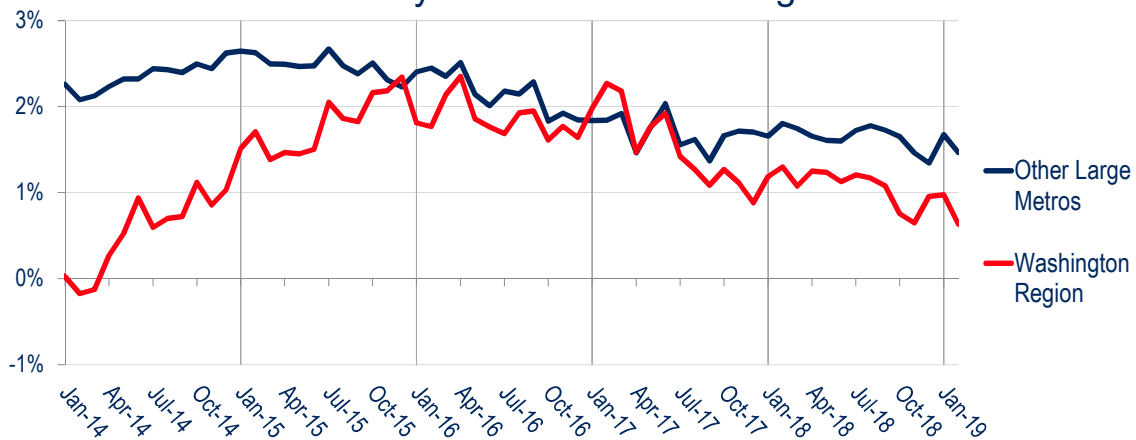


Sources: U.S. Bureau of Labor Statistics, The Stephen S. Fuller Institute at the Schar School, GMU



THE STEPHEN S. FULLER INSTITUTE
For Research on the Washington Region's Economic Future

Change in Jobs Washington Region & Largest Metros Monthly Over-the-Year Change

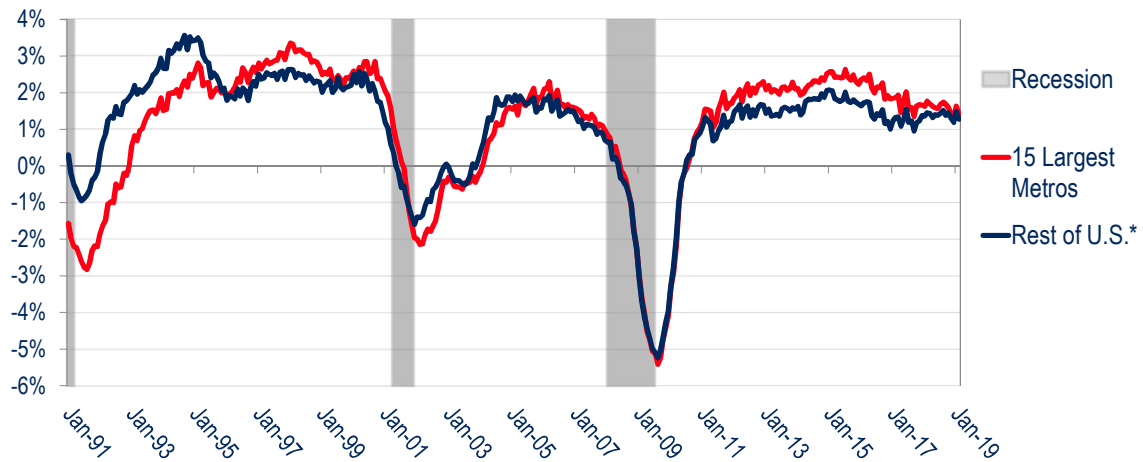


Sources: U.S. Bureau of Labor Statistics, The Stephen S. Fuller Institute at the Schar School, GMU



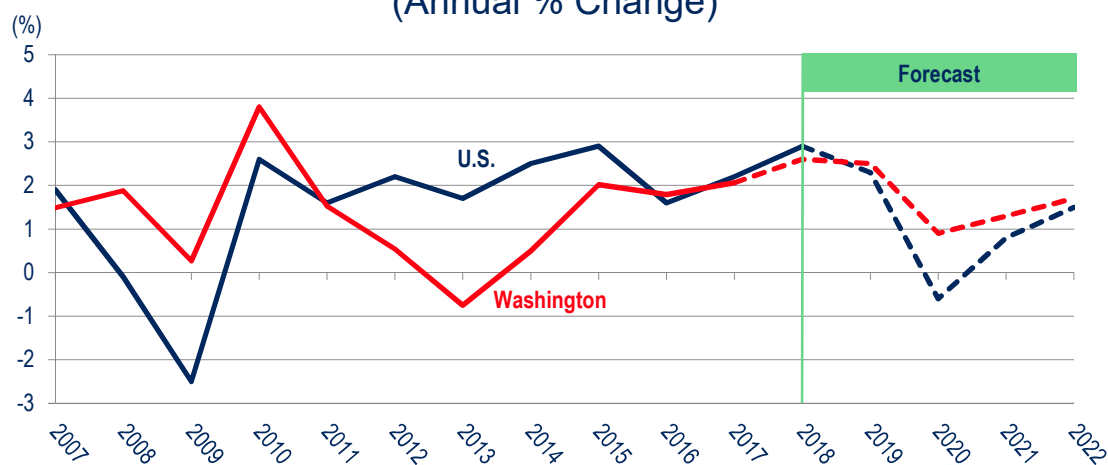
THE STEPHEN S. FULLER INSTITUTE
For Research on the Washington Region's Economic Future

Change in Jobs: Largest Metros & U.S.* Monthly Over-the-Year Change

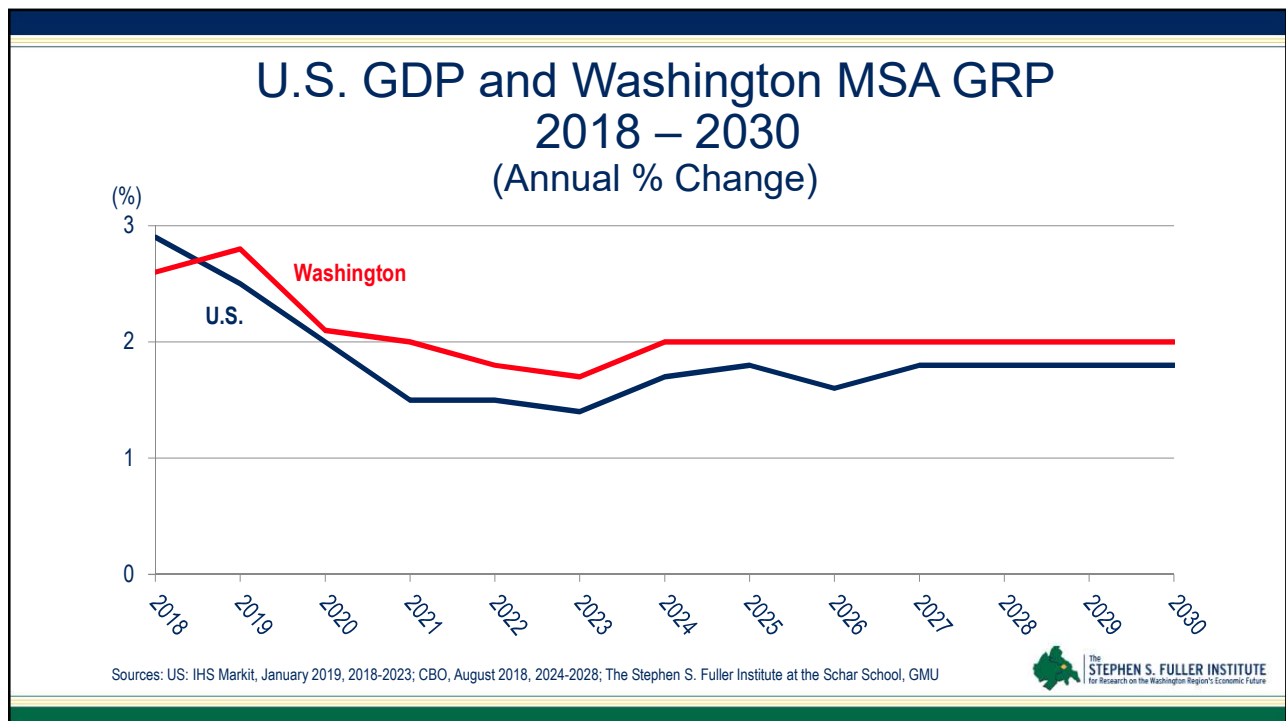
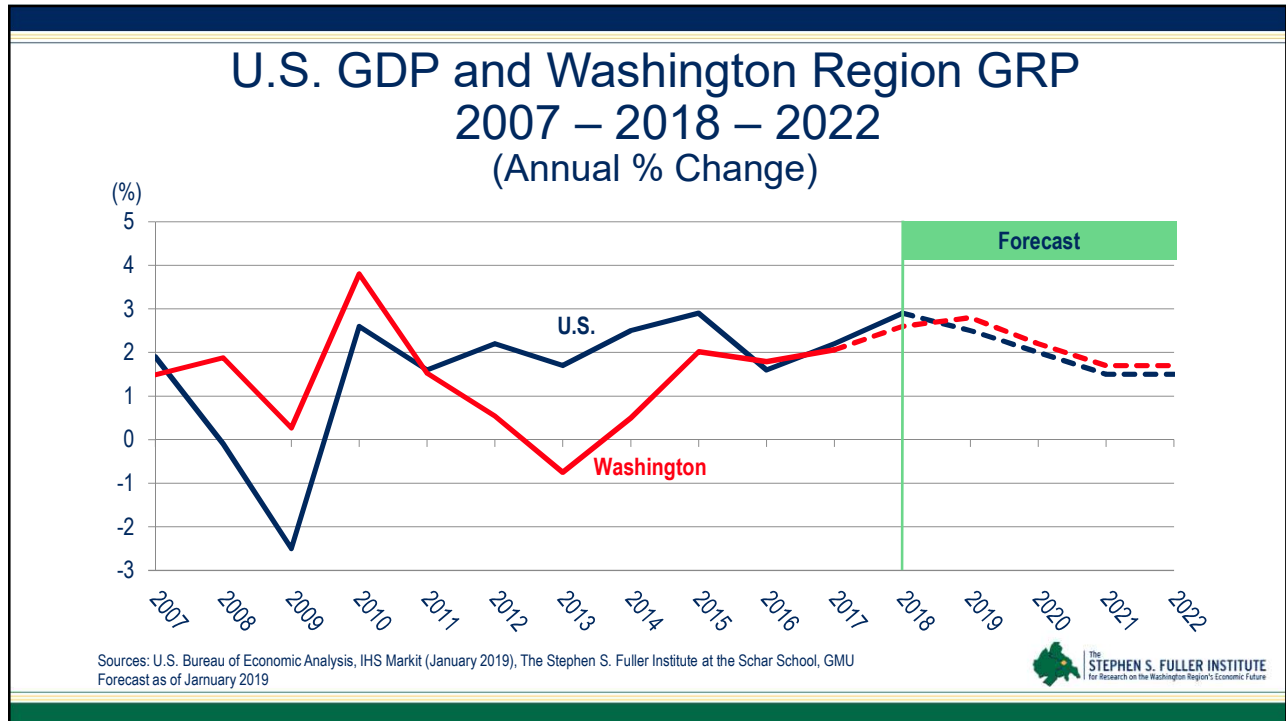


THE STEPHEN S. FULLER INSTITUTE
For Research on the Washington Region's Economic Future

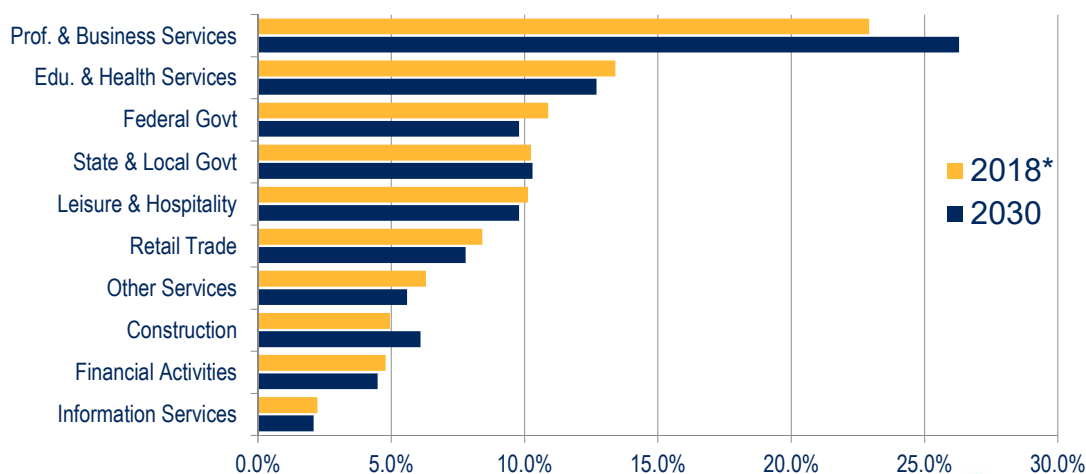
U.S. GDP and Washington Region GRP 2007 – 2018 – 2022 (Annual % Change)



THE STEPHEN S. FULLER INSTITUTE
For Research on the Washington Region's Economic Future



Distribution of Jobs in the Washington Region Select Sectors: 2018 - 2030



Source: IHS Economics; The Stephen S. Fuller Institute at the Schar School, GMU * Preliminary



The STEPHEN S. FULLER INSTITUTE
for Research on the Washington Region's Economic Future

Thank You & Questions

For monthly reports on the
Washington region's economic performance go to

sfullerinstitute.gmu.edu

 **@FullerInstitute**



Schar School of Policy
and Government



The STEPHEN S. FULLER INSTITUTE
for Research on the Washington Region's Economic Future