



2nd Annual Stephen S. Fuller Institute Economic Forum

The Washington Region's Changing Workforce

Jeannette Chapman
Deputy Director and Senior Research Associate
The Stephen S. Fuller Institute
Schar School of Policy and Government
George Mason University

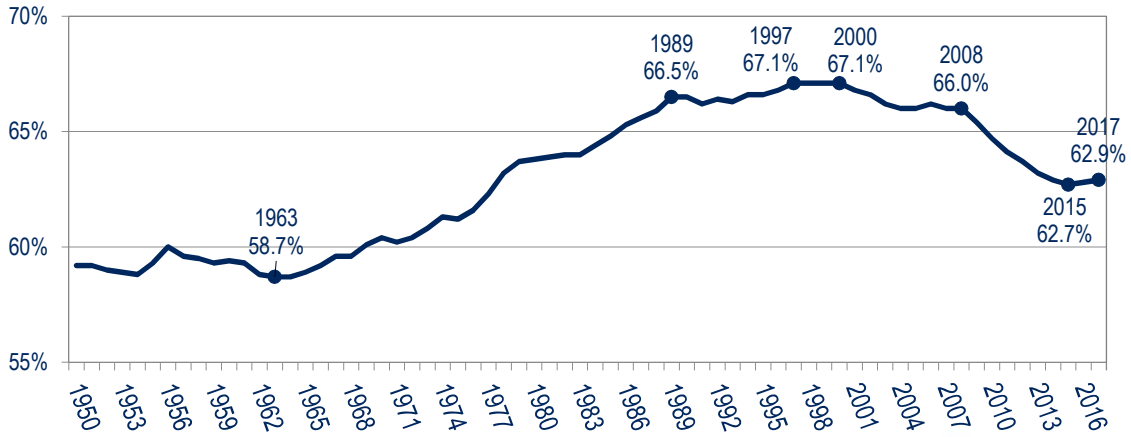


October 3, 2018

Major Labor Force Participation Rate Trends in the U.S.



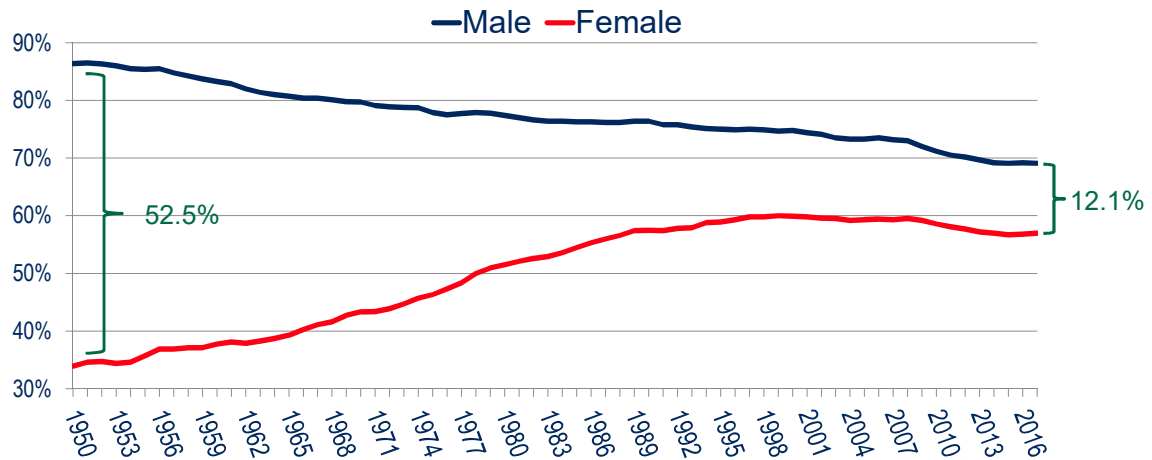
U.S. Labor Force Participation Rates 1950-2017



Sources: U.S. Bureau of Labor Statistics; The Stephen S. Fuller Institute at the Schar School, GMU
NOTE: Civilian, non-institutional population, aged 16+, only



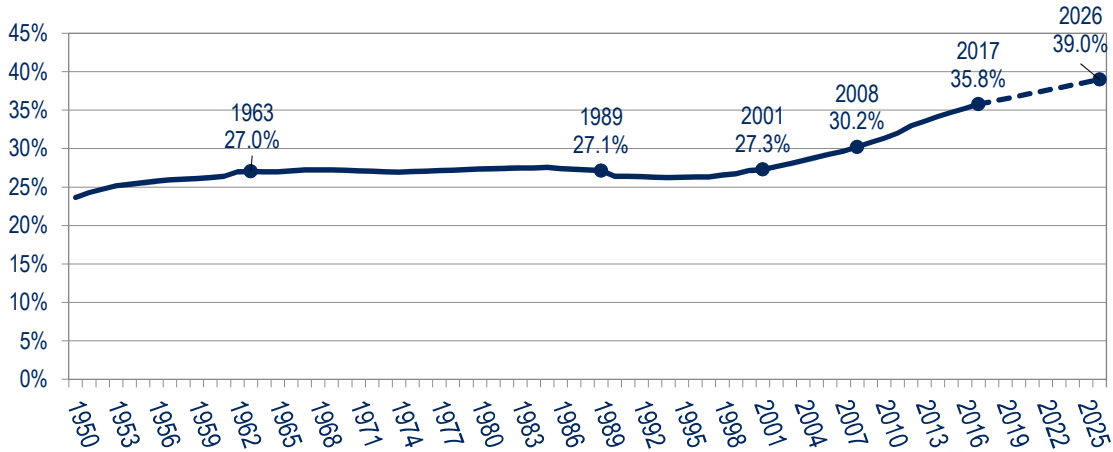
U.S. Labor Force Participation Rates by Sex 1950-2017



Sources: U.S. Bureau of Labor Statistics; The Stephen S. Fuller Institute at the Schar School, GMU
NOTE: Civilian, non-institutional population, aged 16+, only



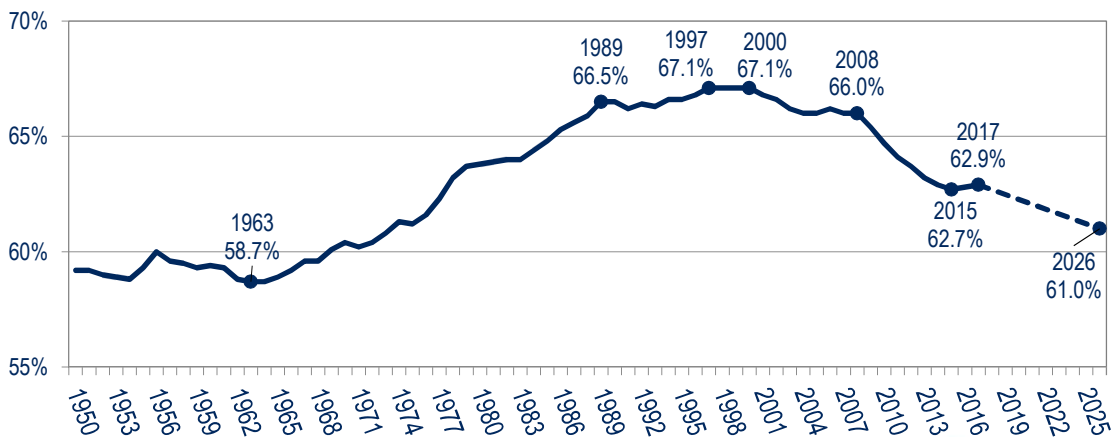
U.S. Share of Population Aged 55+ 1950 – 2017 – 2026 (% of Population 16+)



Sources: U.S. Bureau of Labor Statistics; The Stephen S. Fuller Institute at the Schar School, GMU
NOTE: Civilian, non-institutional population, aged 16+, only



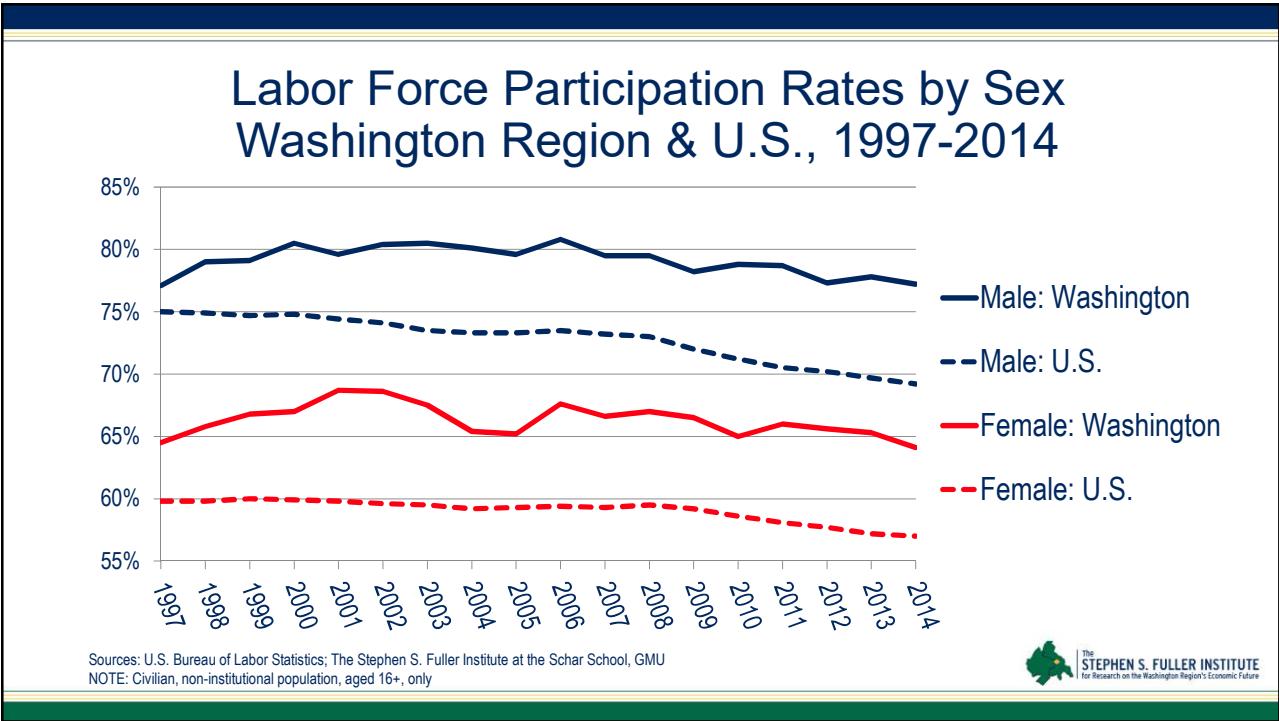
U.S. Labor Force Participation Rates 1950 – 2017 - 2026



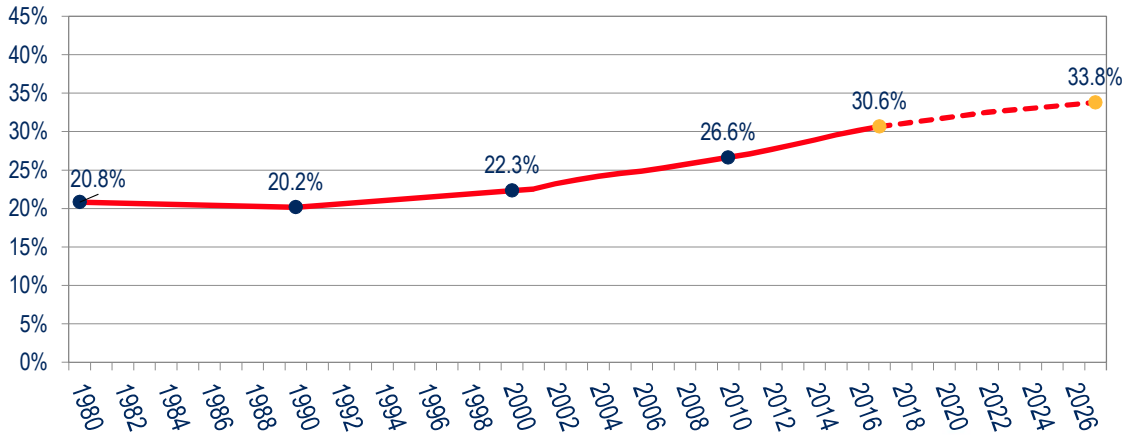
Sources: U.S. Bureau of Labor Statistics; The Stephen S. Fuller Institute at the Schar School, GMU
NOTE: Civilian, non-institutional population, aged 16+, only



Major Labor Force Participation Rate Trends in the Washington Region

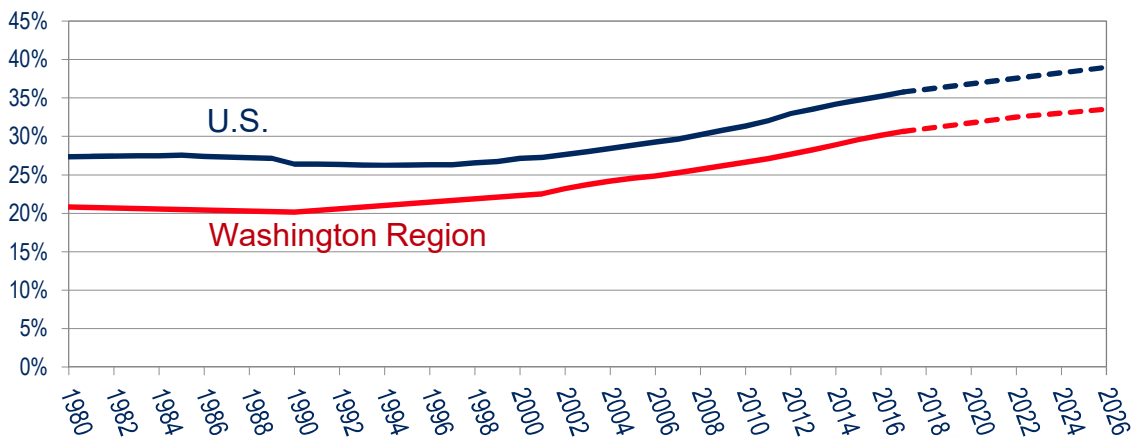
Washington Region Share of Population Aged 55+ 1980 – 2017 – 2027 (% of Population 15+)



Sources: U.S. Census Bureau (1980 & 1990 Decennial Census, 2000-2010 Intercensal & v17 Population Estimates);
The Stephen S. Fuller Institute at the Schar School, GMU

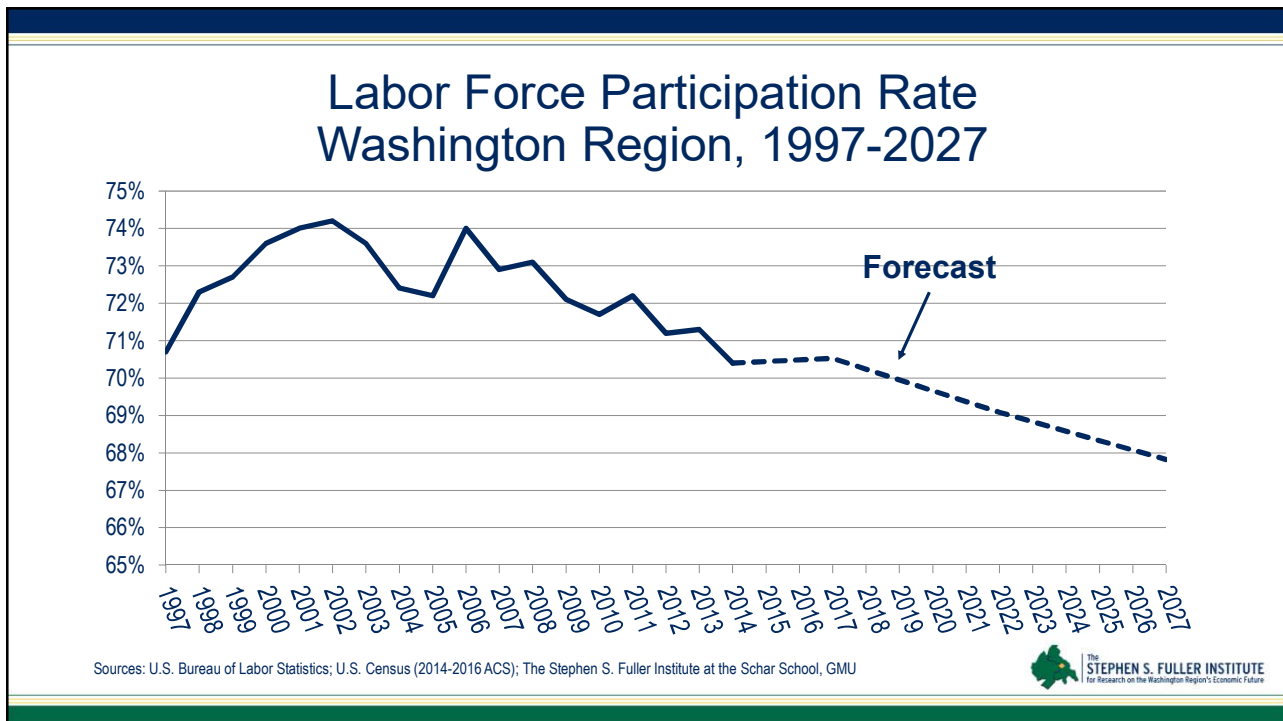
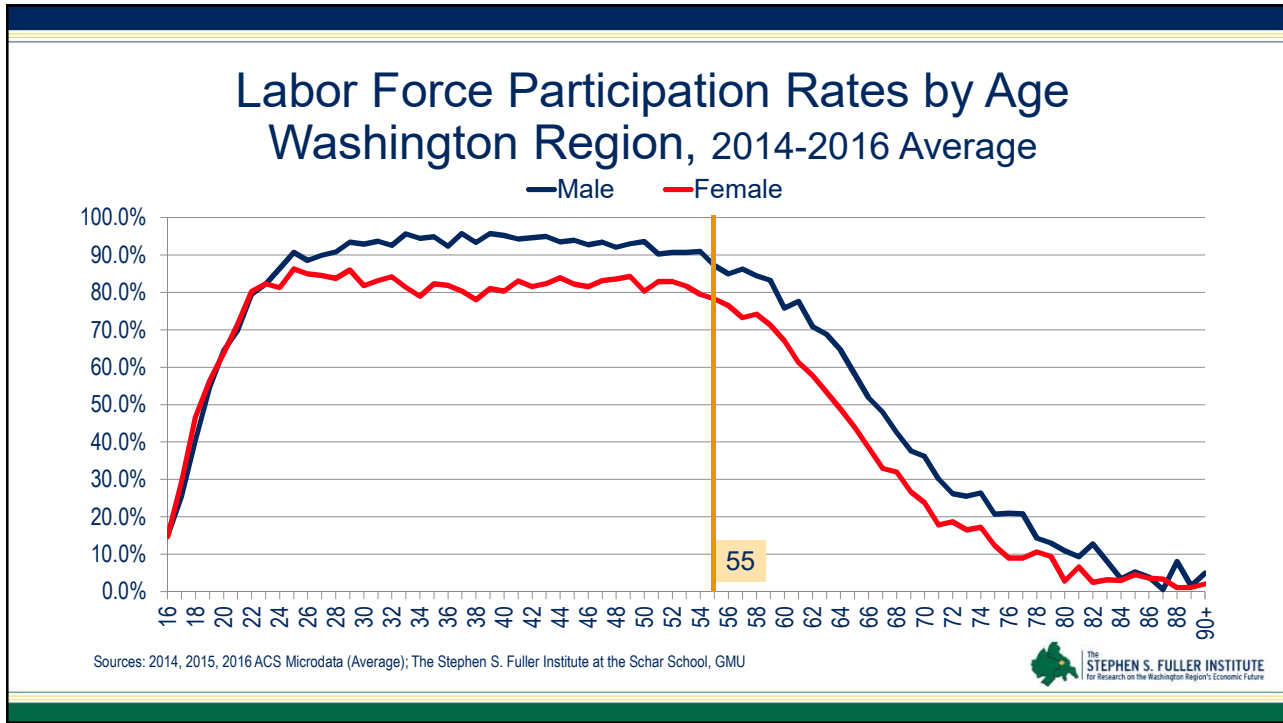


Washington Region & U.S. Share of Population Aged 55+ 1980 – 2017 – 2026

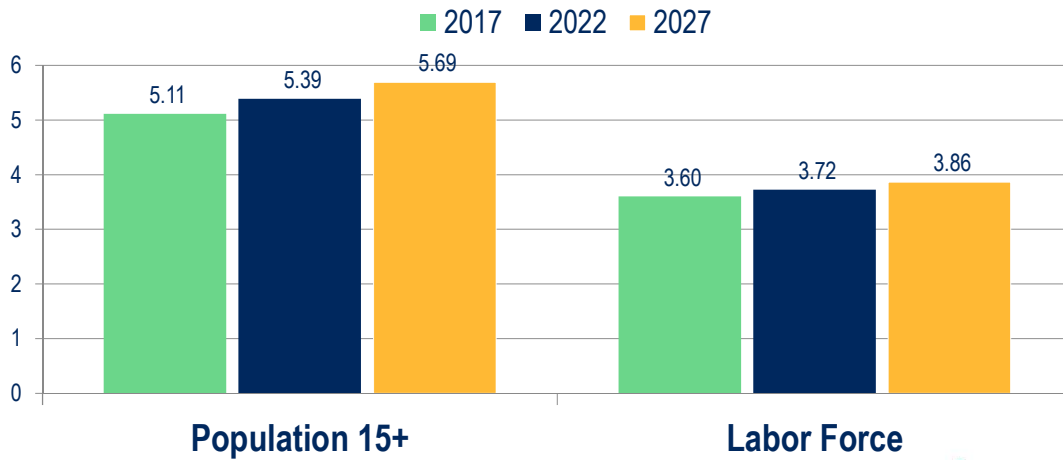


Sources: U.S. Census Bureau (1980 & 1990 Decennial Census, 2000-2010 Intercensal & v17 Population Estimates); U.S. Bureau of Labor Statistics
The Stephen S. Fuller Institute at the Schar School, GMU NOTE: Population 15+ (WMSA) or civilian, non-institutional population, aged 16+ (US)





Forecast of Population & Labor Force Washington Region, 2017-2027 (in millions)

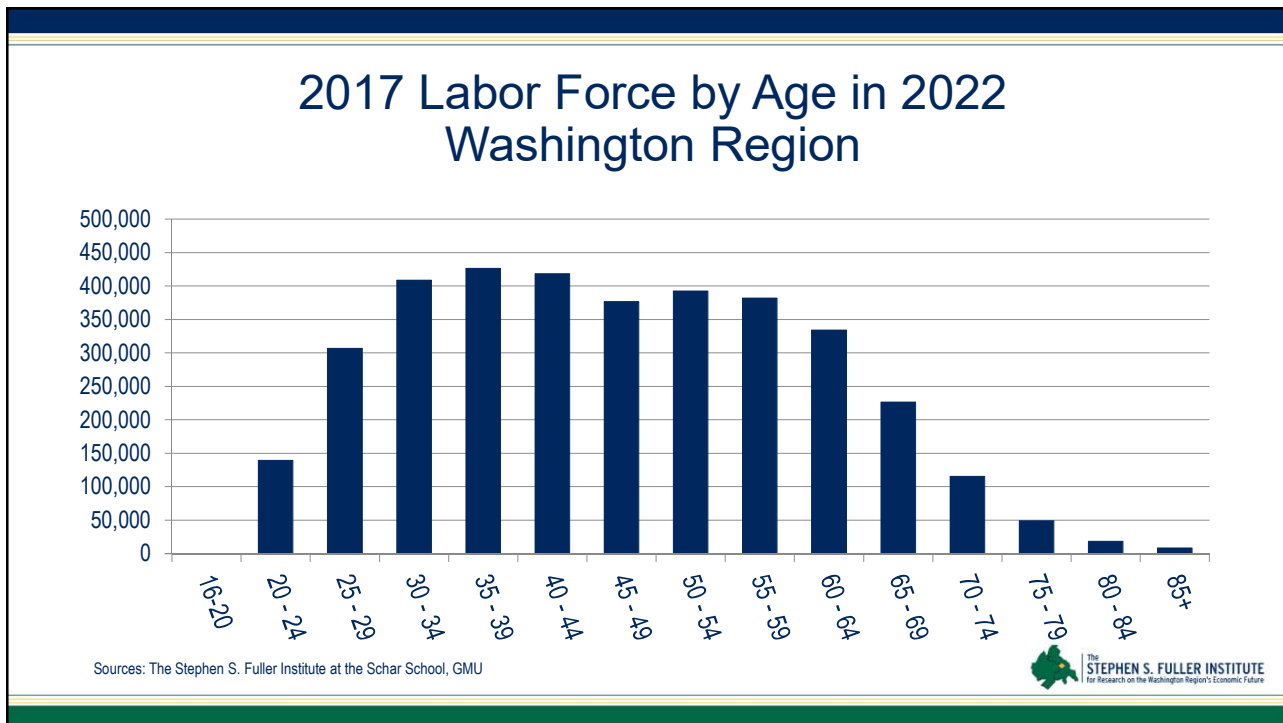
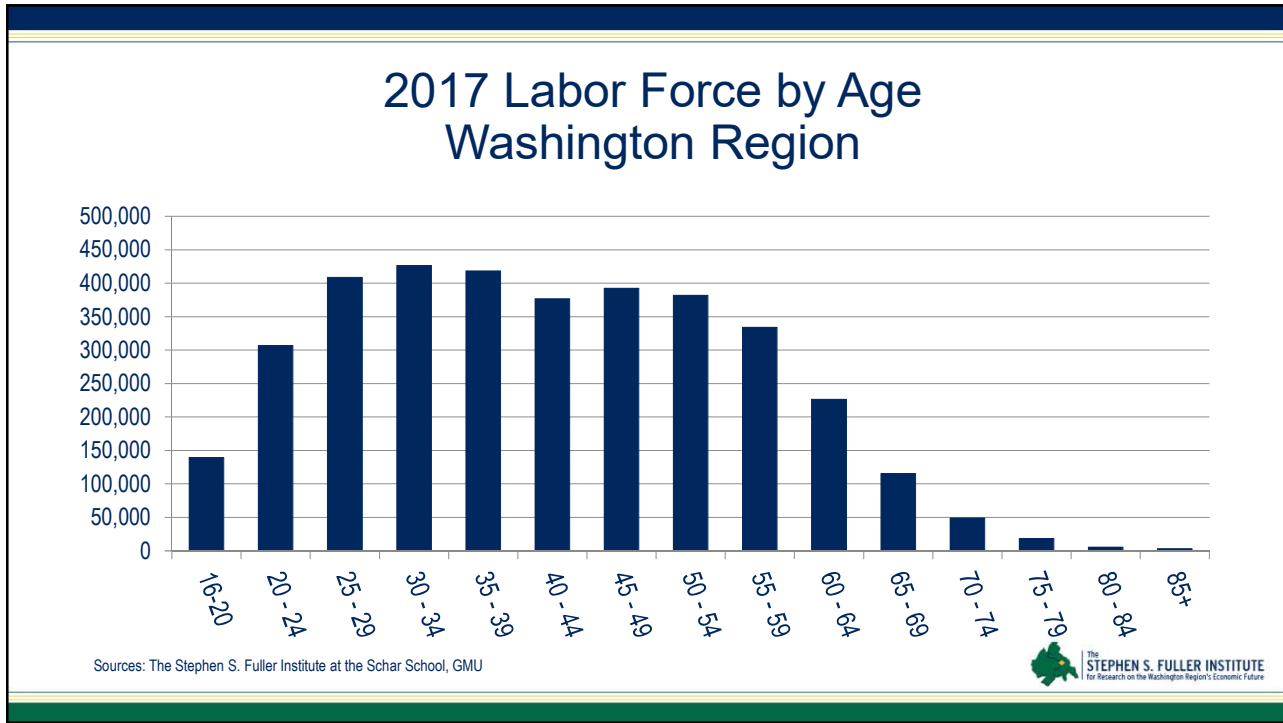


Sources: The Stephen S. Fuller Institute at the Schar School, GMU

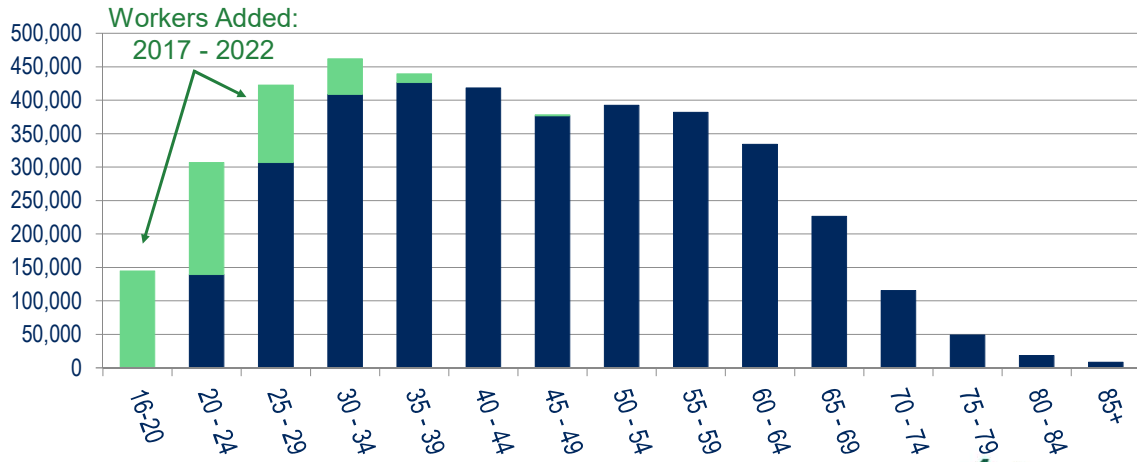


Estimates of Retirees and Job Leavers in the Washington Region





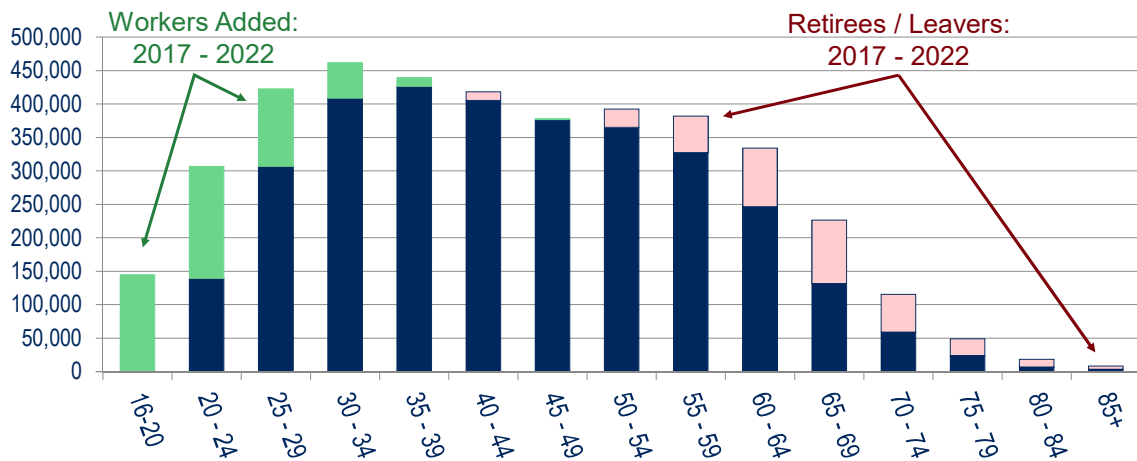
Labor Force by Age in 2022 Washington Region



Sources: The Stephen S. Fuller Institute at the Schar School, GMU



Labor Force by Age in 2022 Washington Region



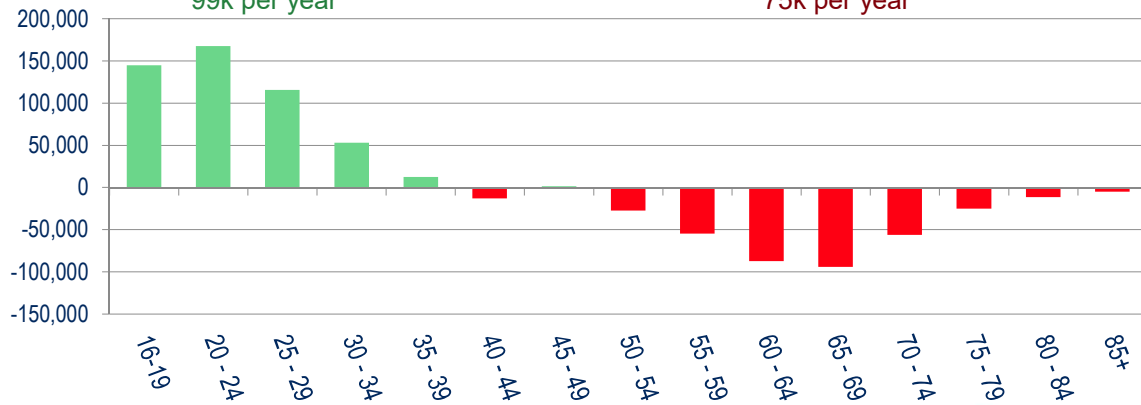
Sources: The Stephen S. Fuller Institute at the Schar School, GMU



Labor Force Change: Worker's Age in 2022 Washington Region, 2017 - 2022

Workers Added: +495k
99k per year

Retirees / Leavers = 375k
75k per year



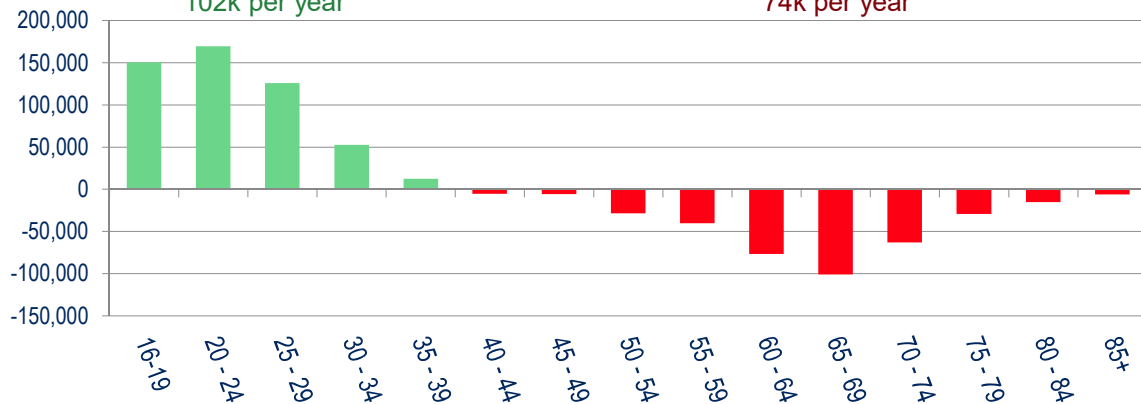
Sources: The Stephen S. Fuller Institute at the Schar School, GMU



Labor Force Change: Worker's Age in 2027 Washington Region, 2022 - 2027

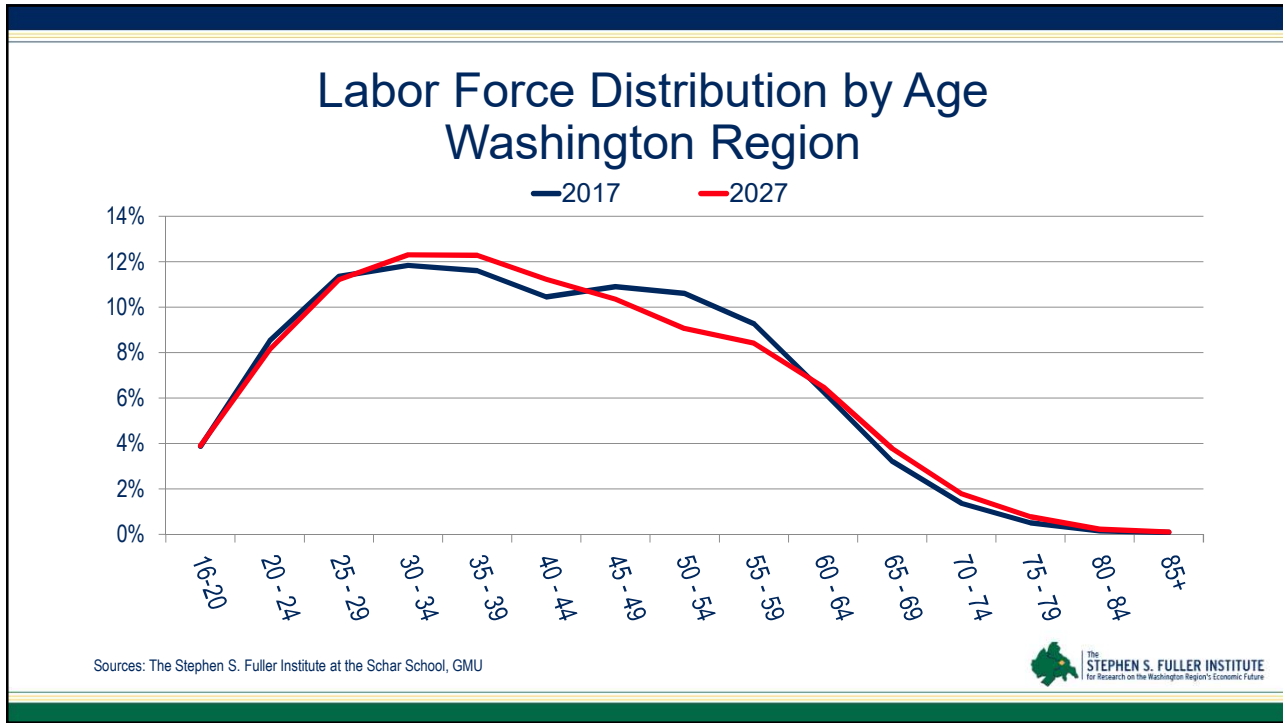
Workers Added: +511k
102k per year

Retirees / Leavers = 372k
74k per year




Sources: The Stephen S. Fuller Institute at the Schar School, GMU



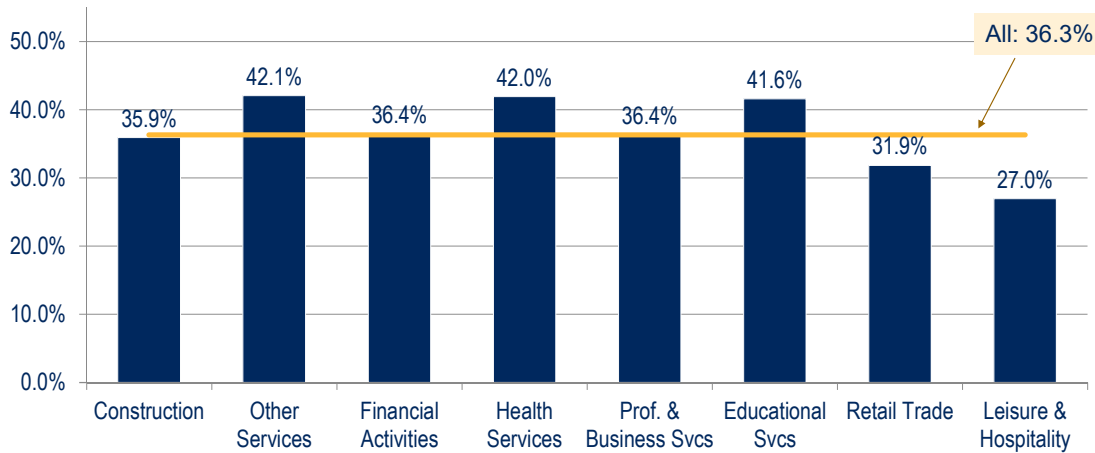


Aging Industries & Occupations in the Washington Region



The STEPHEN S. FULLER INSTITUTE
For Research on the Washington Region's Economic Future

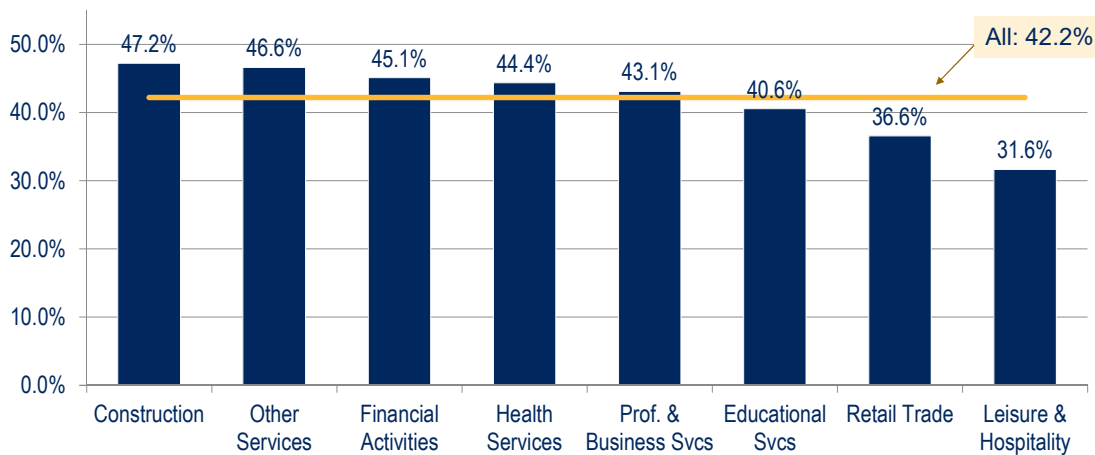
Share of Job-Holders Aged 45+ By Select Sector Washington Region, 2006



Sources: Quarterly Workforce Indicators; The Stephen S. Fuller Institute at the Schar School, GMU *through 3Q 2017



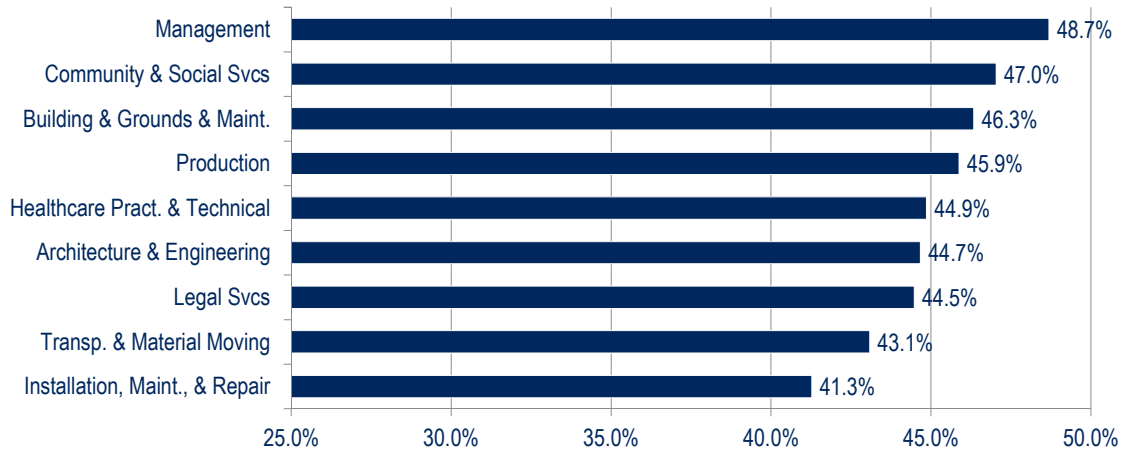
Share of Job-Holders Aged 45+ By Select Sector Washington Region, 2017*



Sources: Quarterly Workforce Indicators; The Stephen S. Fuller Institute at the Schar School, GMU *through 3Q 2017



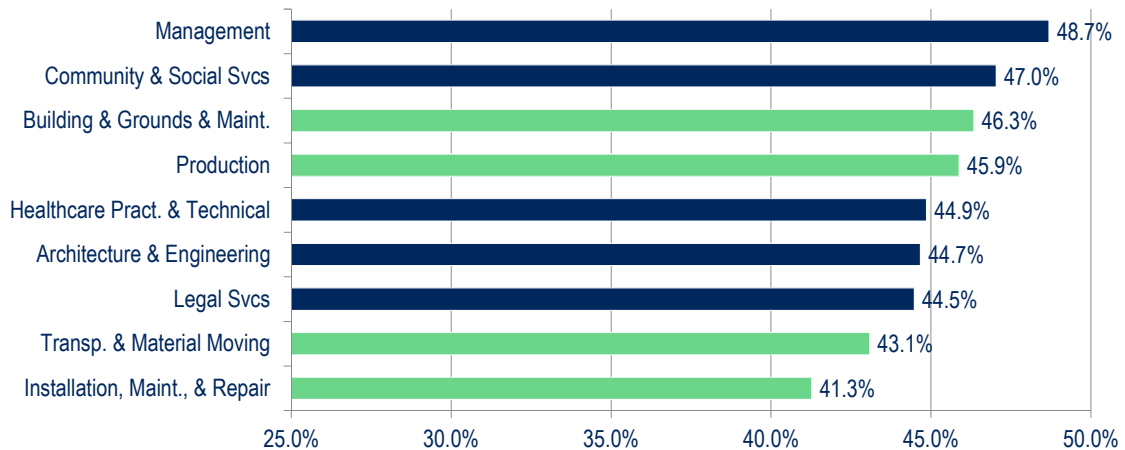
Occupations w/ Largest % of Job-Holders Aged 45+ Washington Region, 2014-2016 Average



Sources: 2014, 2015, 2016 ACS Microdata (Average); The Stephen S. Fuller Institute at the Schar School, GMU
NOTE: Private Sector Job-holders



Occupations w/ Largest % of Job-Holders Aged 45+ Washington Region, 2014-2016 Average



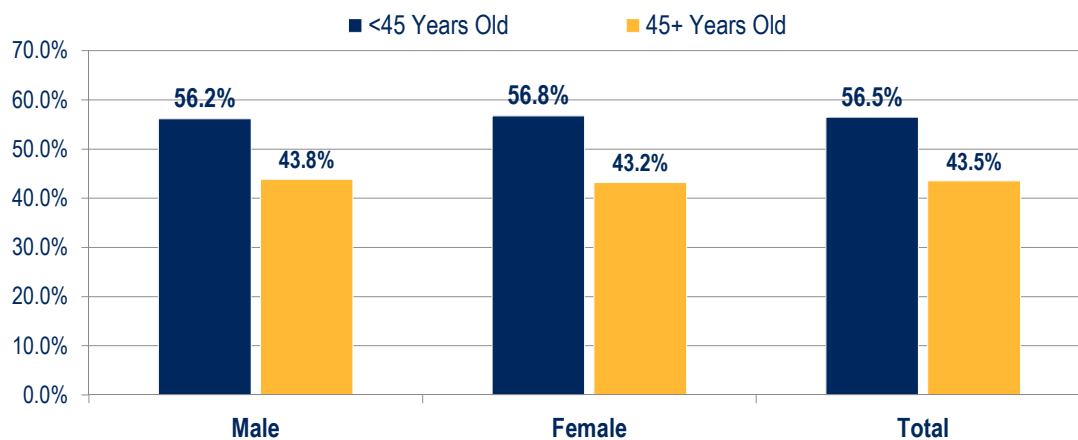
Sources: 2014, 2015, 2016 ACS Microdata (Average); The Stephen S. Fuller Institute at the Schar School, GMU
NOTE: Private Sector Job-holders



Differences between Older & Younger Workers in the Washington Region

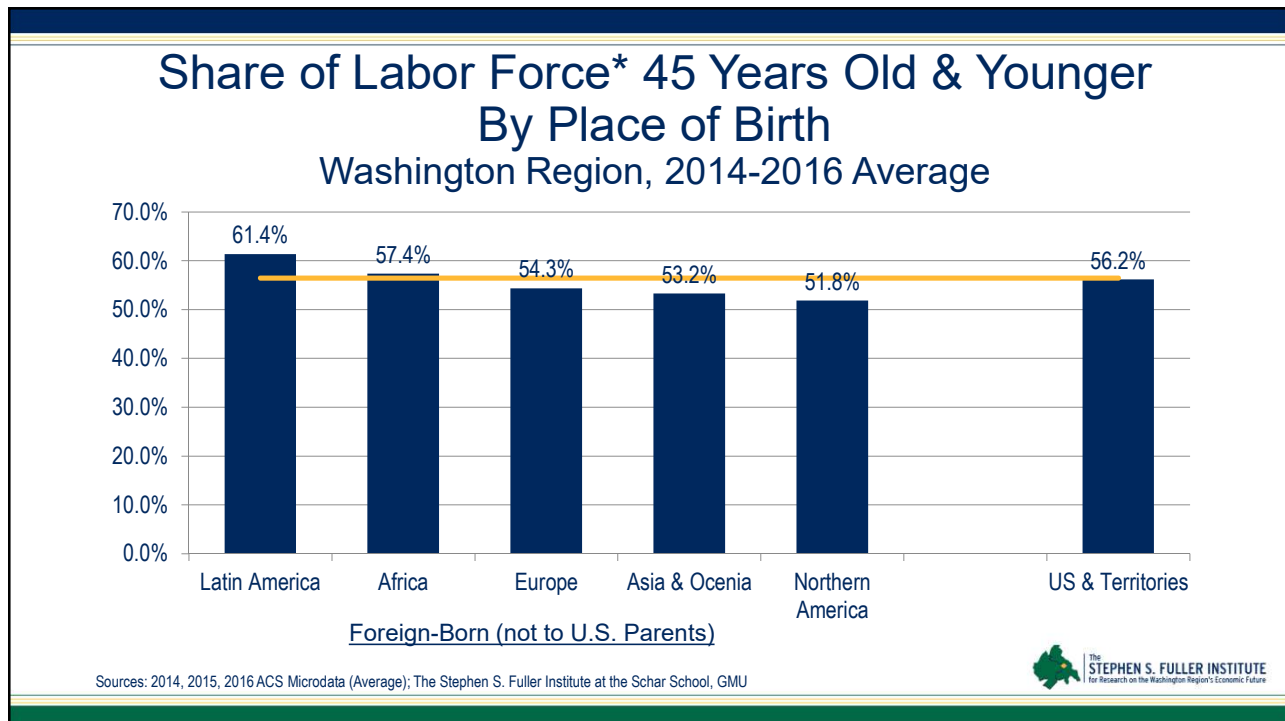
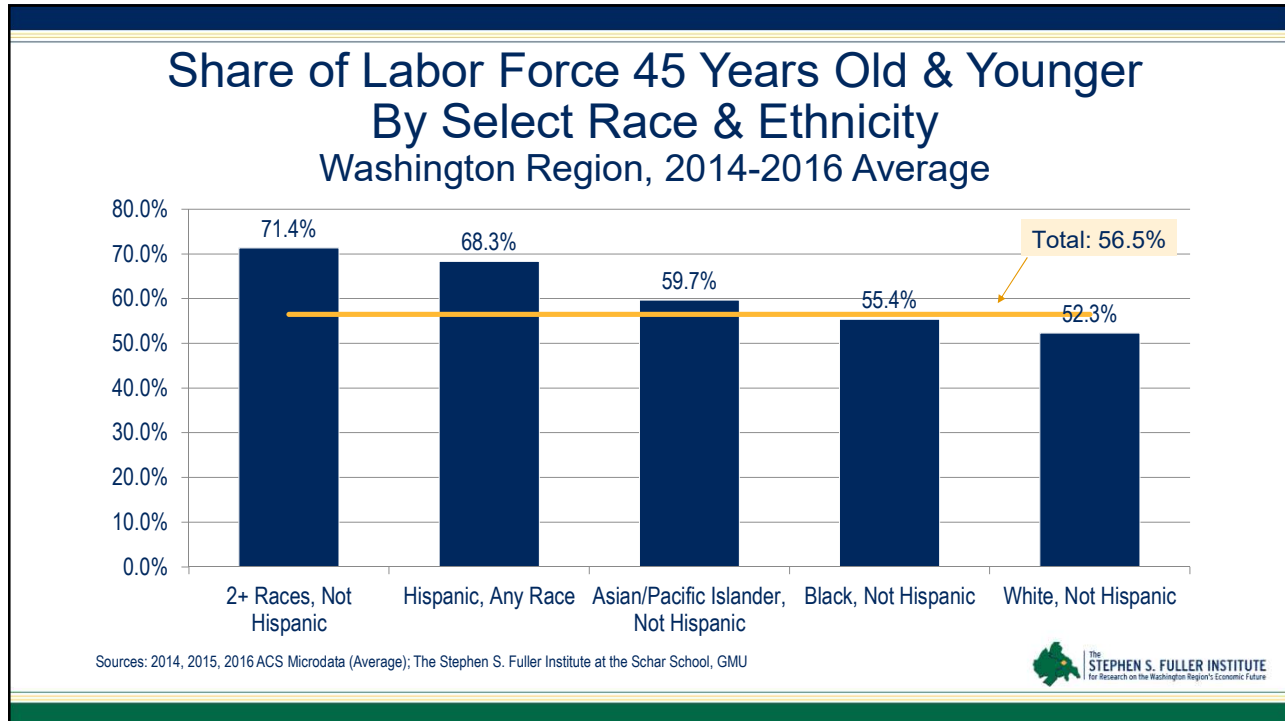


Labor Force By Sex Washington Region, 2014-2016 Average

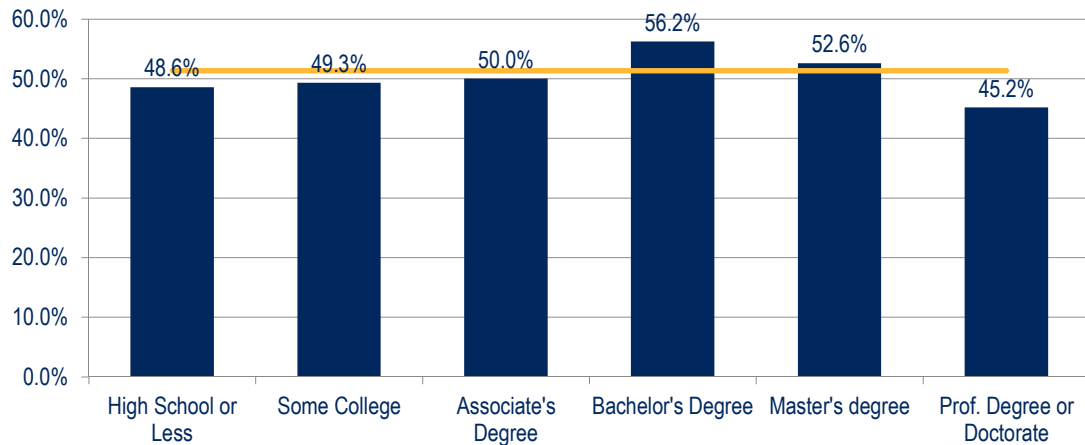


Sources: 2014, 2015, 2016 ACS Microdata (Average); The Stephen S. Fuller Institute at the Schar School, GMU





Share of Labor Force* 45 Years Old & Younger By Educational Attainment Washington Region, 2014-2016 Average



Sources: 2014, 2015, 2016 ACS Microdata (Average); The Stephen S. Fuller Institute at the Schar School, GMU
*Includes workers aged 25+



Most Common Undergraduate Degree Washington Region, 2014-2016 Average

Labor Force Aged <45	Labor Force Aged 45+
Political Science & Govt.	Business Mgt. & Admin.
Business Mgt. & Admin.	Political Science & Govt.
Psychology	Accounting
Computer Science	Economics
English Language & Lit.	General Business
Accounting	English Language & Lit.
Economics	Psychology

Sources: 2014, 2015, 2016 ACS Microdata (Average); The Stephen S. Fuller Institute at the Schar School, GMU
*Includes workers aged 25+ with a B.A.

